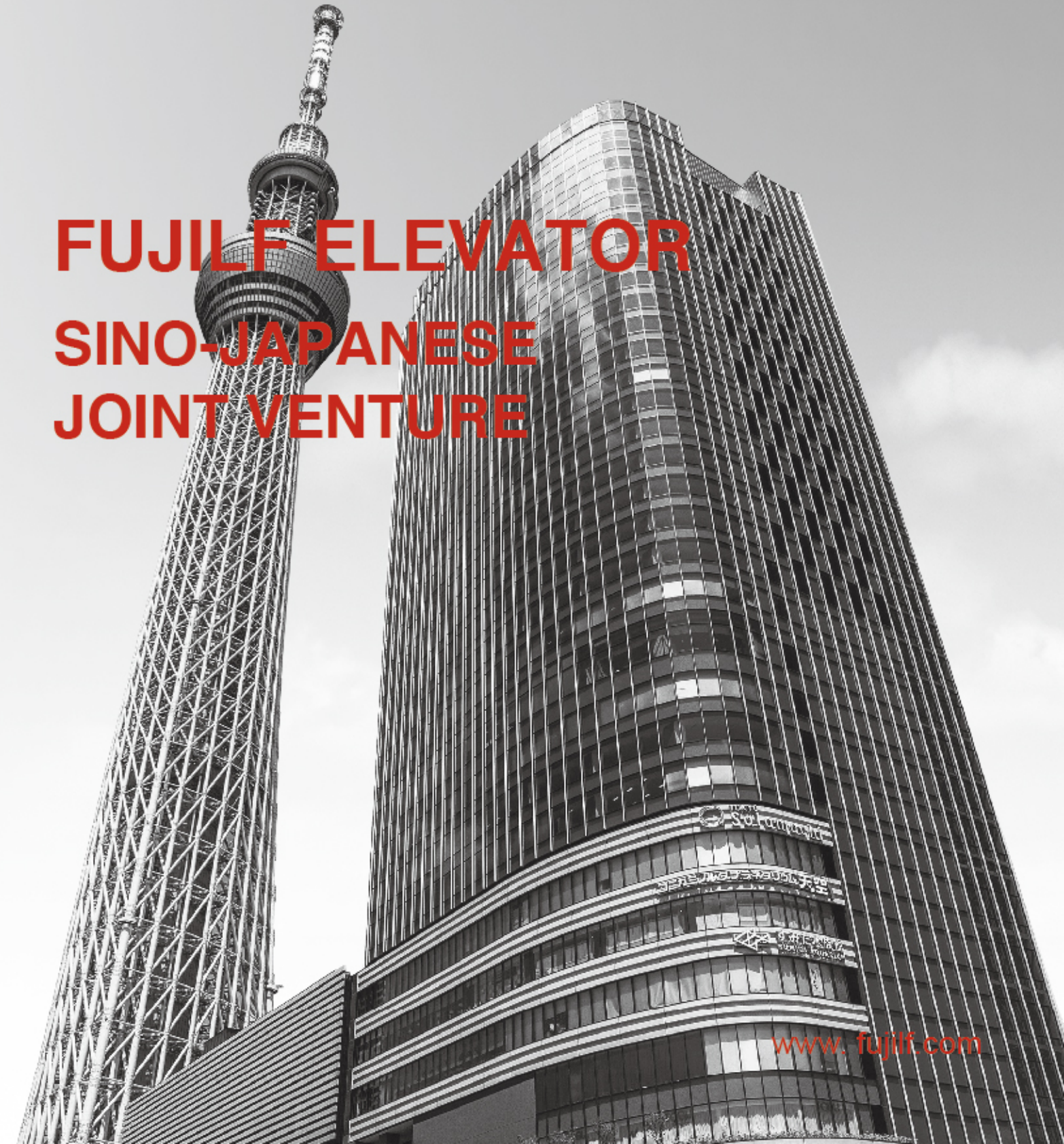




FUJILF



FUJILF ELEVATOR SINO-JAPANESE JOINT VENTURE



www.fujilf.com

FUJILF ELEVATOR CO., LTD.

Company introduction

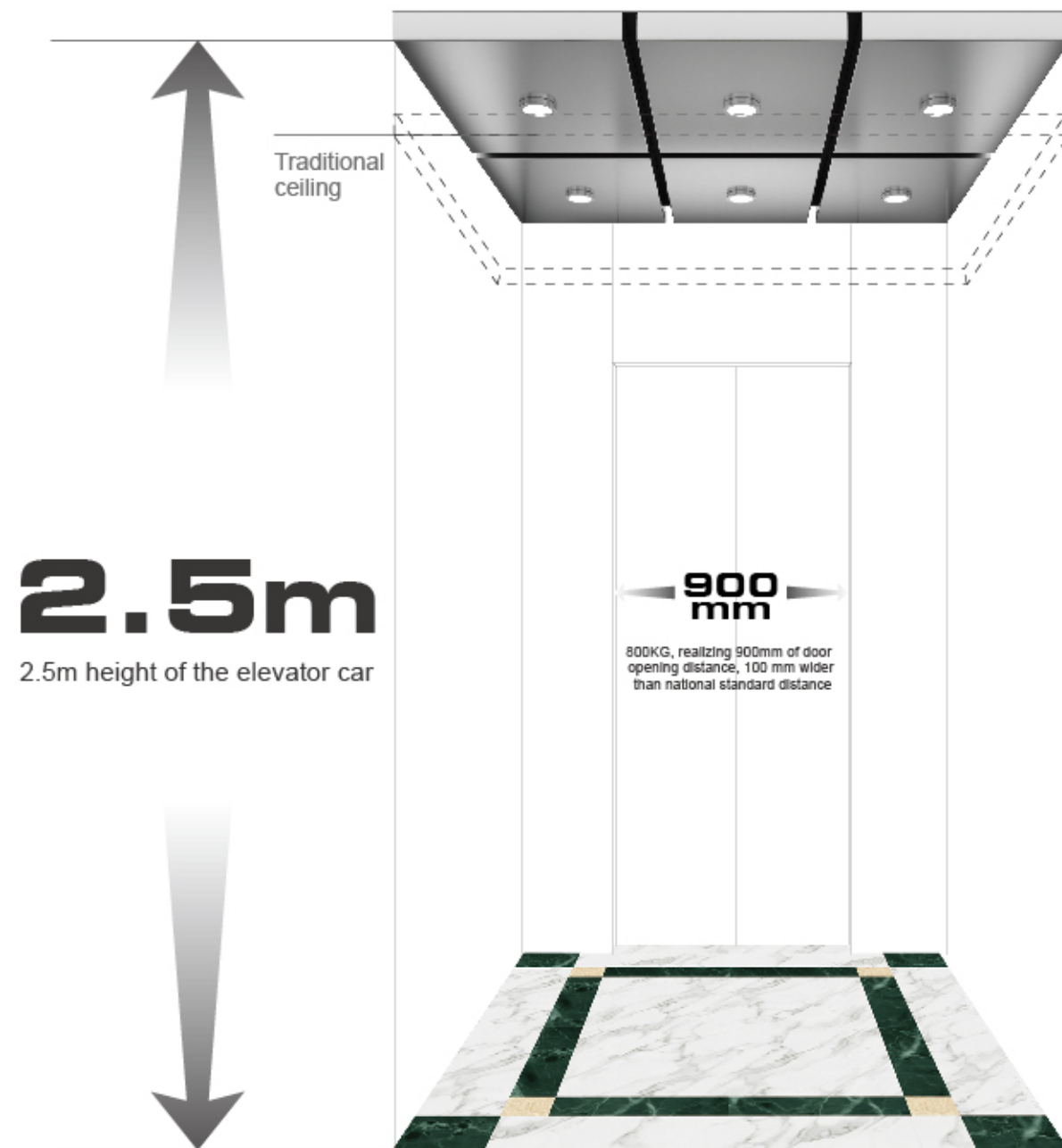
SUZHOU FUJILF ELEVATOR CO., LTD. founded in 2009, is a sino-japan venture that integrates elevator and escalator research, development, sales, manufacture, installation, repair service into one. It covers an area of 43000 square meters workshop and with 50 R&D engineers. It is developing energy-saving, low pollution, low noise, and long life of green environment protection elevator, constantly launching new series that can be widely applied to residential and commercial elevator. By now, we have customer more than 40 countries.

FUJILF absorb advanced international management methods, established the characteristics of "quality as the enterprise core". Service innovation is an effective way to make us more competitive. We are customer-focused, strive to build own service image and increase the value of our products by offering standard, professional and carefully considered service to make the customers feel safe, reliable and satisfied. We always put customer and customer demand in the first place, do practical work style, strict attitude, service intentions.



EXQUISITE DESIGN

Energy-creating & saving, intellectual, the intelligent let the dream go further

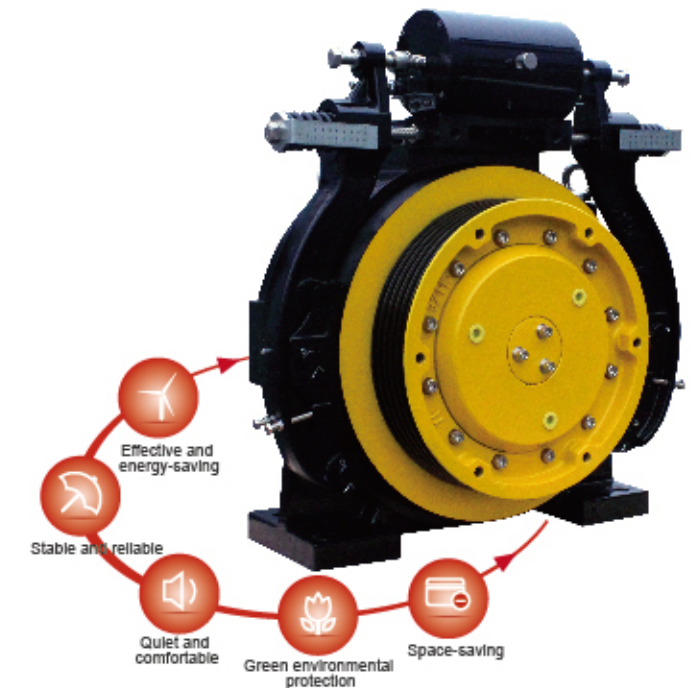


FOUR CHARACTERISTICS -- ENVIRONMENTAL PROTECTION • SAFETY • MUTE • WISDOM

Environmental protection-fulfill our duty with all my heart for green life

Permanent magnet synchronous technology

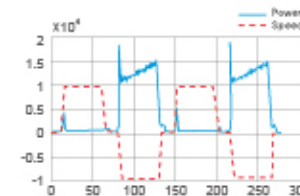
FUJILF elevator makes the control system more reliable—using rare earth materials and the motor drive of outer rotor structure and permanent magnet synchronous, and full integration of coaxial transmission technology, digital inverter technology and computer combined control technology. Compared to the gear elevator with the same load, it can save 50% energy; without oil, it can reduce fuel consumption, to avoid fire accidents arising due to oil and so on.



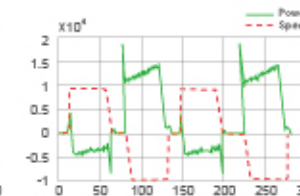
Energy regeneration techniques

FUJILF elevator converts the mechanical energy under the particular condition into electrical energy through energy regeneration techniques, returning to the grid for use, which can maximize the use of energy, to help customers and achieve environmental protection, economic bidirectional interests.

Load
No-load-Variation conditions of lift power

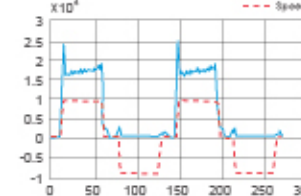


a. Use brake resistance

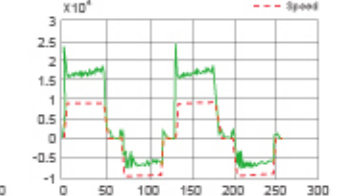


b. Use energy feedback device

Full
Full-load-Variation conditions of lift power



a. Use brake resistance



b. Use energy feedback device

SMALL MACHINE ROOM PASSENGER ELEVATOR

Small machine room design easily and freely
Enters into numerous buildings

Seamless, Perfect Space Docking

Compared with the traditional elevator, FUJILF small machine room passenger elevator designs the reasonable layout, thus realizing the same size of the elevator room and the well, so that the room area saved can have more possibility for use. In the reduction of construction cost, at the same time, it greatly enhances the appearance of the building.



Small machine room



Ordinary machine room

The advantage of passenger elevator with small machine room

- ① Reducing 250mm machine room height;
- ② Delicate and light;
- ③ Simple, convenient installation and arrangement;
- ④ Saving the building space.



MACHINE ROOMLESS PASSENGER ELEVATOR

Cutting-edge technologies, create new
Riding experience

Unconstraint, to Create Opportunity

FUJILF series machine roomless passenger elevator in a compact and flexible permanent magnet synchronous gearless traction machine, make the room area exactly the same with lift shaft, forming a green channel, realizing flexible layout, to make the elevator and building a more harmonious integration, with the simple and elegant appearance.

Ingenious design, to create a smart space

Moving control cabinet, traction machine and speed governor in the original engine room to the lift shaft, to save the construction area, FUJILF elevator creates operation scheme that elevator can still be safe operation without machine room, which add color for city landscape.

Easy to maintenance, reducing the trouble about future

Using the upper host-machine arrangement, FUJILF elevator makes the connection line between the control cabinet and host-machine short enough, introducing new technology, less wiring, installation more convenient.



RESIDENTIAL ELEVATORS CAR DECORATION CONFIGURATION



LF-K01 Standard

Ceiling: Superior hairline stainless steel frame, middle large-area daylighting acrylic panel, LED
 Car wall: Superior hairline stainless steel plate
 Car door: Superior hairline stainless steel plate
 Car floor: Anti-wear marble-like PVC

Note: Above design plotted by computer, which seems different from actual product.

Operation panel



Landing door



Note: Pictures have been drawn by computer. It might be slightly different from actual colors. Please take real product as criterion.

BUSINESS ELEVATOR CAR DECORATION CONFIGURATION



LF-K03 Optional

Ceiling: LED light with hairline stainless steel frame
Car wall: Hairline stainless steel, back wall mirror etched in centre
Car door: Hairline stainless steel
Car floor: PVC or marble



LF-K02 Optional

Ceiling: Rose-gold etched mirror
Car wall: Rose-gold stainless steel frame, central LED lighting
Handrail: Rose-gold stainless steel
Car floor: PVC or marble



LF-K05 Optional

Ceiling: Ammonites skin car line, painted steel, down lights
Car wall: Mirror steel plated Rose gold, ammonites skin, mirror-steel decoration bar, hiding light, shell
Car floor: PVC or marble



LF-K04 Optional

Ceiling: LED light with hairline stainless steel frame
Car wall: Hairline stainless steel
Car door: Hairline stainless steel
Car floor: PVC or marble

BUSINESS ELEVATOR CAR DECORATION CONFIGURATION



LF-K07 Optional

Ceiling: St.St frame with white acrylic lighting panel
Middle panel: Mirror, Etching
Side panel: Mirror, Hairline
Floor: PVC or marble



LF-K06 Optional

Ceiling: St.St frame with white acrylic lighting panel, Wood
Middle panel: Wood, Mirror
Side panel: Wood, Mirror
Floor: PVC or Marble



LF-K09 Optional

Ceiling: Mirror stainless steel frame, acrylic light-passing board, four sides downlight
Car wall: Mirror stainless steel, solid wood finish
Handrail: Mirror stainless steel wood tube round handrail
Floor: PVC

LF-K08 Optional

Ceiling: LED down light in titanium gold stainless steel
Car wall: Titanium gold mirror etching
Car door: Titanium gold mirror etching
Handrail: Combination of solid wood and titanium gold
Car floor: PVC or marble



PANORAMIC ELEVATOR

Grants the passengers appreciate beautiful scene outside



In the hotel, office building, shopping center etc., panoramic elevator provides the people with distinctive scenes. The passengers can see the flowing scenes outside the building. It explores the visual space, offers the more comfortable psychological pleasure to the passengers. It adds the building aesthetics. It is a flowing sight line in modern city. If building is condensed music, then FUJILF is jumping musical note in the construction. FUJILF Panoramic elevator series grants the passengers to enjoy extraordinary luxury and dignity through the diverse car style, elegant and attractive car decoration.

High performance control functions

Simple and convenient diagnosis is convenient for the parameter setting and revision.

Highly integrated control components

High speed processing information fulfills the accurate control.



Panoramic type



1 side view



2+1 side view



3 side view



Nude type

PANORAMIC ELEVATORS CAR DECORATION CONFIGURATION



LF-P01 Standard ▲

Car cover: Simple upside and downside cover
 Observation wall: Hairline stainless steel+laminated glass
 Decoration roof: Hairline stainless steel+acrylic+down lamp
 Car wall: Hairline stainless steel+laminated glass
 Handrail: Mirror stainless steel round tube handrail to the ground
 Floor: PVC or marble

LF-P02 Optional ▼

Upper / lower hood: Mirror stainless steel press sill, red acrylic decoration cover
 Panorama wall: Laminated glass three pieces
 Decorative top: Painted steel framework, acrylic lighting decoration
 Car wall: Hairline stainless steel
 Car door: Hairline stainless steel
 Handrail: Stainless steel double-tube
 Floor: PVC



LF-P03 Optional ▲

Car cover: Round corner-cut hairline stainless steel
 Observation wall: Round 6+6 safety laminated glass (3 pieces)
 Decoration roof: Hairline stainless steel frame, acrylic transparent board and lighting lamp
 Car wall: Hairline stainless steel
 Handrail: Φ38 stainless steel tube
 Floor: PVC or marble

LF-P04 Optional ▼

Car cover: Long hairline stainless steel, etched, sprayed gold sand
 Observation wall: Laminated glass
 Decoration ceiling: Stainless steel with short lines+acrylic+down lamp
 Car wall: Stainless steel with short lines
 Handrail: Mirror stainless steel three-pipe handrail
 Floor: PVC or marble



Note: Above design plotted by computer, which seems different from actual product.

STRETCHER ELEVATOR UNDERTAKING IMPORTANT TASK

FUJILF elevator is specialized to design elevator products which can contain stretcher for high-rise building. FUJILF stretcher elevator products integrates with German advanced technology with advantages such as spacious lift car, stable operation, reasonable design, and convenient installation and so on, which will play essential role in high-rise building.

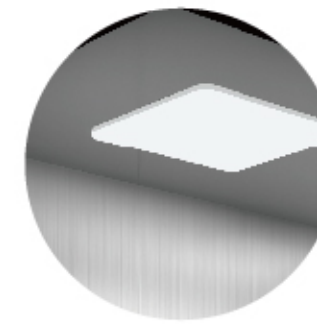


The advantage of stretcher elevator

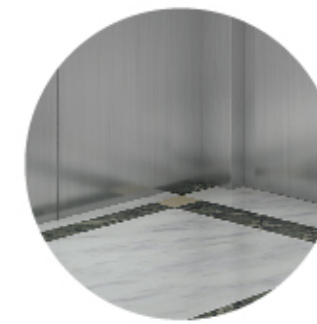
- ①. The car equipped with folding first-aid stretcher cart and soft stretcher, striving for valuable time;
- ②. The elevator can be automatically converted into a state of "emergency". Direct operation to the needed floor;
- ③. Special design, without modification in lift shaft, avoiding waste.



STRETCHER ELEVATOR CAR DECORATION



Suspended ceiling adopts steel plate power injection which is fashionable and beautiful



PVC floor which is beautiful and elegant



LF-B01 Standard → → →

Ceiling: Steel plate power injection, acrylic Car wall: Hairline stainless steel Floor: PVC

DECORATION SERIES

Landing door series



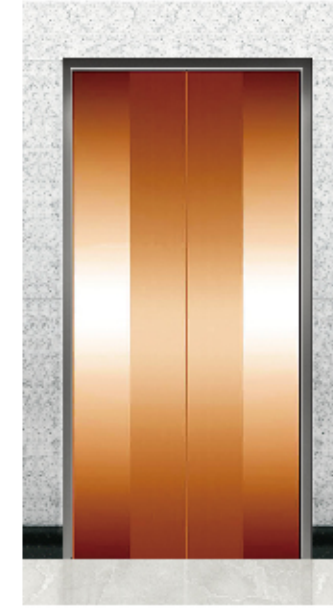
LF-D01 Optional
Frame glass door



LF-D02 Optional
Frameless glass door



LF-D03 Optional
Mirror etching stainless steel



LF-D07 Optional
Rose gold etching stainless steel



LF-D08 Optional
Rose gold mirror etching stainless steel



LF-D09 Optional
Rose gold mirror etching stainless steel



LF-D04 Optional
Mirror etching stainless steel



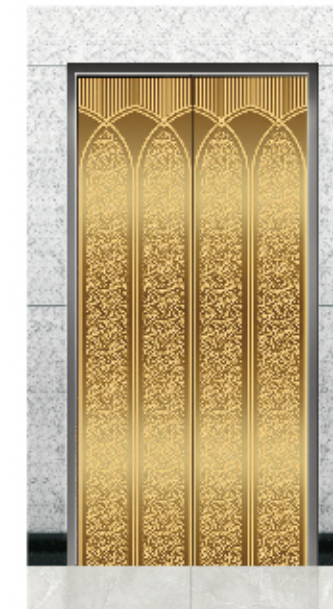
LF-D05 Optional
Gold etching stainless steel



LF-D06 Optional
Mirror etching stainless steel



LF-D010 Optional
Gold etching stainless steel



LF-D011 Optional
Gold etching mirror stainless steel

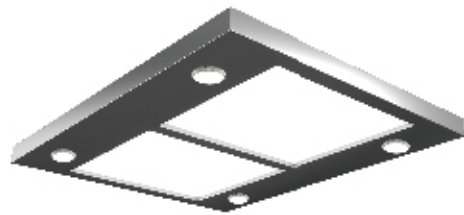


LF-D012 Optional
Gold etching stainless steel

Remark: Due to limited space, we can provide you with separate leaflet of more various choices.

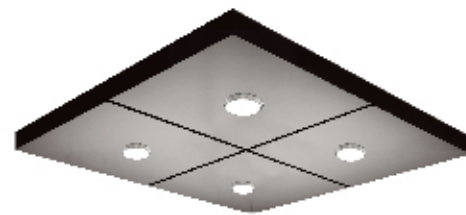
DECORATION SERIES

Ceiling Series



LF-T01 Optional

Superior hairline stainless steel frame, middle large-area daylighting acrylic panel, LED lamp



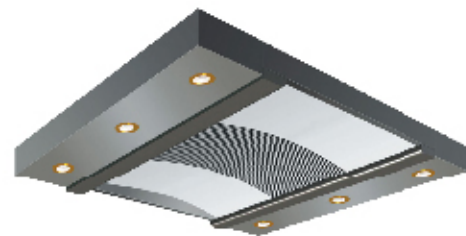
LF-T02 Optional

Coated steel plate, with four embedded LED downlights (flat design is adopted to avoid scratching of car ceiling while moving furniture, especially suitable for residential elevators)



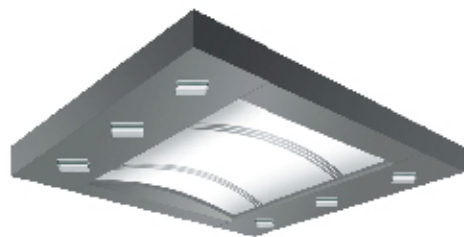
LF-T03 Optional

Double arched white organic light-emitting panel, soft lighting design of central down lamp.



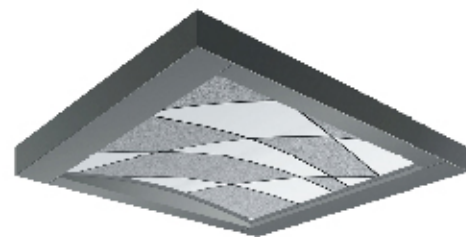
LF-T04 Optional

Central image arch, stainless steel base plate is supplemented with soft lighting design of down lamp at both sides.



LF-T05 Optional

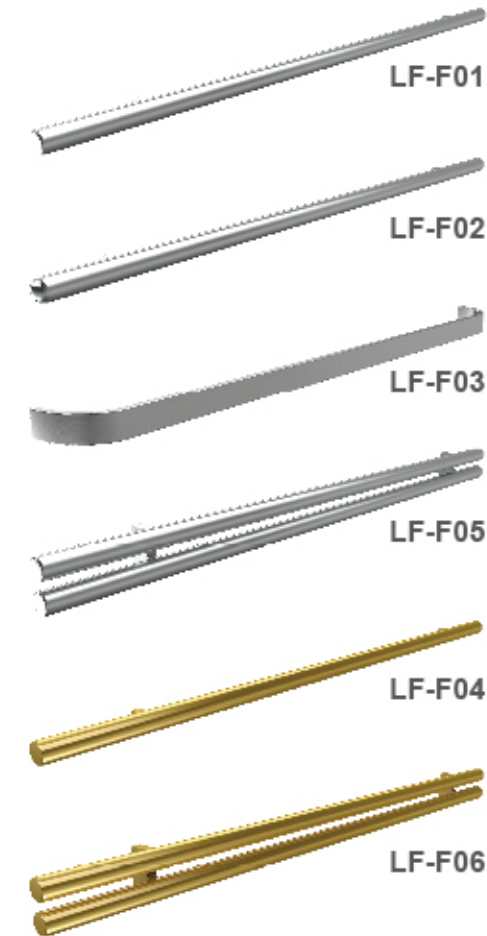
Diamond hollow transparent light pole, soft lighting design of arched white light-emitting panel.



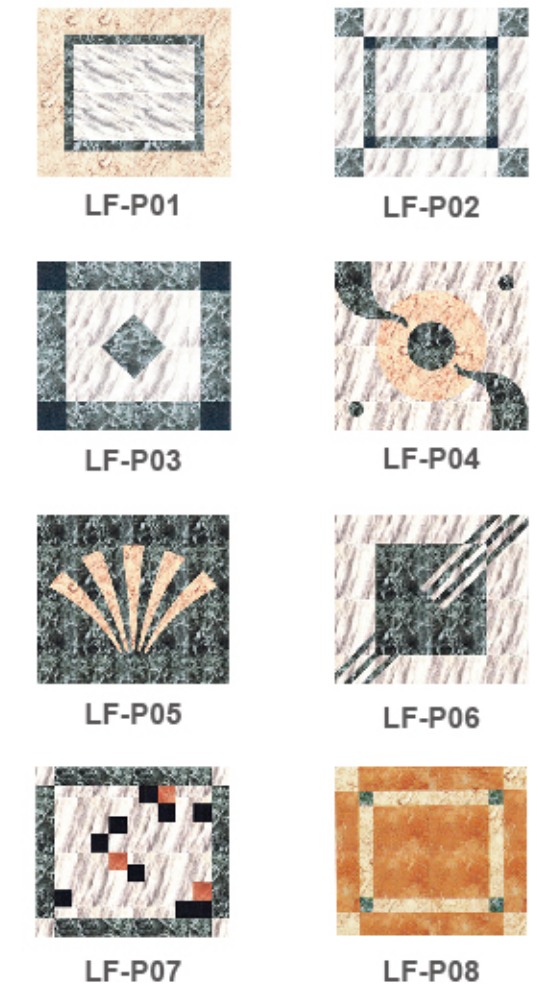
LF-T06 Optional

Soft lighting design of broad image arch.

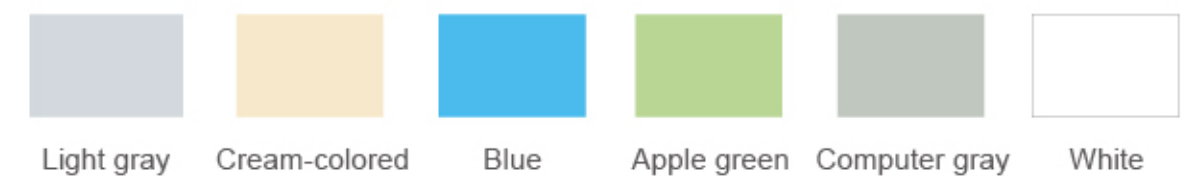
Handrail (Optional)



Floor (Optional)



Color Cards (Optional)



DECORATION SERIES

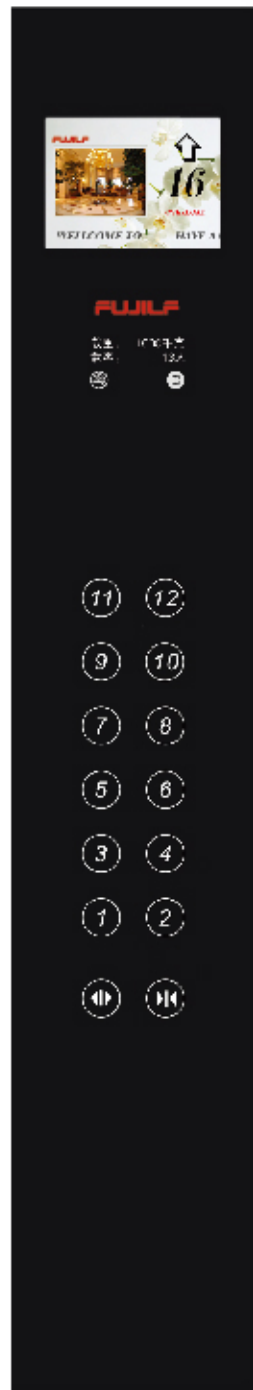
Human interface design



LF-COP02
Standard



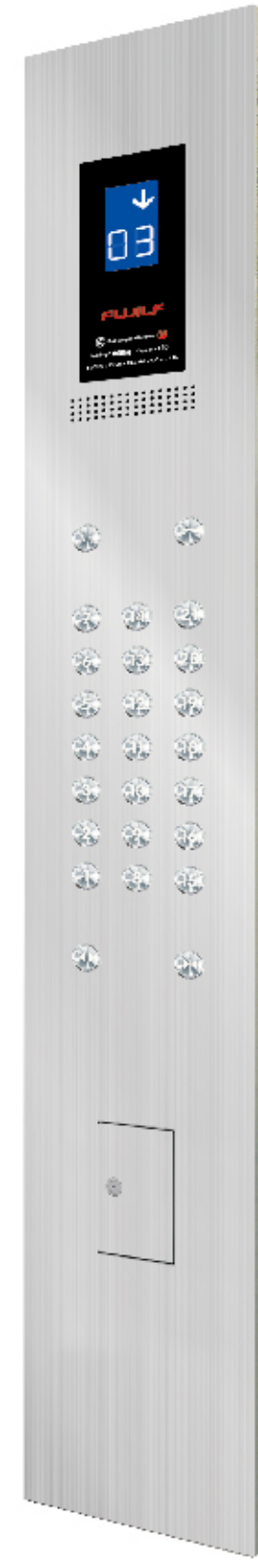
LF-HOP02
Optional



LF-COP03
Optional



LF-HOP03
Optional



LF-COP04
Optional

Operation panel

LF - C04 full height operation box matched with 8" LCD and hairline stainless steel button.

TFT-LCD (Optional)



4.3" Pure display color LCD



7" Picture type display



8" Picture type display



12.1" Video type display

Button (Optional)



LF-N01



LF-N02

Panel material (Optional)



LF-MB01

Mirror stainless steel



LF-MB02

Titanium gold stainless steel



Calling box

LF-HOP04

Call-out: LF - W04 bottomless calling box equipped with 4.3" true color LCD and hairline stainless steel button.

Landing direction indicator (Optional)



LF-DZ01



LF-DZ02



LF-DZ03



LF-DZ04

Remark: Due to limited space, we can provide you with separate leaflet of more various choices.

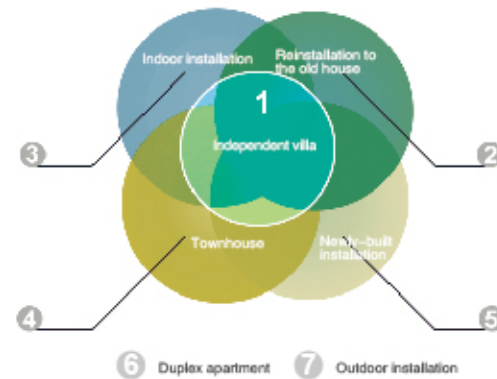
VILLA ELEVATOR

Perfect, relaxing and comfortable life

FUJILF Villa elevator is specially designed for private families. It provides you with a noble living space. It superiorly distributes your leisure and privacy period. It forms its unique style by the bright and concise decoration, safe and practical design concept. After choosing it, you can a brand-new feeling that it integrates the practical, artistic and fashionable properties into one.

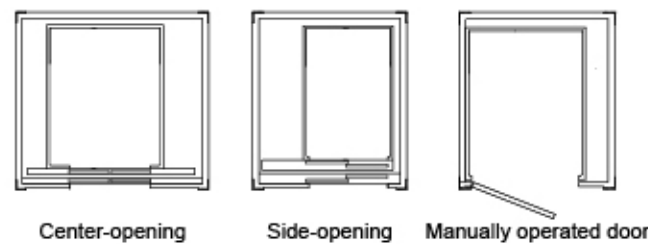
Exclusive enjoyment of taste with extravagant charm

It is known for the noble and fashionable decoration; it is famous for strong visual beauty; and it is appreciated for the exquisite use of materials and excellent manufacturing technology. The shining and shimmering elevator, with high quality, is definitely suitable for your splendid architecture.



Alternative door styles, different choice

Various open modes for customers to choose, meanwhile, personalized mode can be designed according to customer requirements for usage.



LF-V01 Standard

Ceiling: Stainless steel mirror, LED lighting
Car wall: Hairline stainless steel, mirror
Floor: PVC or marble



Villa elevator technical specification table

Product model	Villa elevator
Use	Private and independent residence use
Control system	Effective vector VVVF frequency invert
Single-phase	220v/380v power supply
Traction machine	The effective and energy-saving traction machine
Door machine	VVVF door machine
Car height mm	2100mm
Rated load (kg)	250~400kg
Rated speed (m/s)	0.4m/s
Max. lifting height	12m

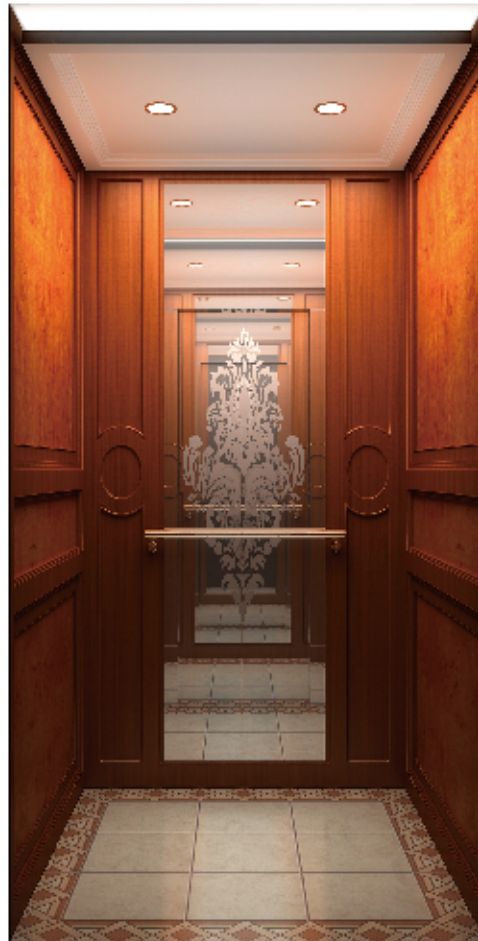


VILLA ELEVATOR CAR DECORATION CONFIGURATION



LF-V03 Optional

Ceiling: Wooden veneer, down light
Car wall: Wooden veneer, solid wood lines,
etch mirror stainless steel
Handrail: Titanium stainless steel
Floor: PVC or marble



LF-V02 Standard

Ceiling: Mirror stainless steel
Car wall: Wood grain paint steel
Car door: Wood grain
Floor: PVC or marble



LF-V04 Optional

Ceiling: Golden panel, tube light
Car wall: Wood, gold foil
Floor: PVC or marble

LF-V05 Optional

Ceiling: Mirror stainless steel frame, ceiling lamp
Car wall: lacquered wooden board, personalized
beauty mirror, personalized wallpaper
Car floor: PVC or marble



VILLA ELEVATOR CAR DECORATION CONFIGURATION

Operation panel



LF-HOP02



LF-HOP05



Outphone in COP
CEMERGENCY USE

Panel:Hairline stainless steel(Optional:Mirror, Titanium gold)
Display method:Standard:Dot-matrix display(Optional:LCD)
Calling button:Standard:Red light(Optional:Blue, Green)(with Braille)

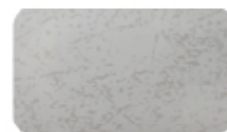
Laminated sheet



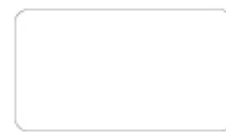
PPS13



PPS93



PPS25



A32PP

PVC Floor



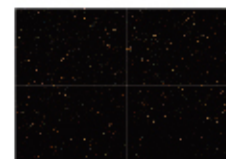
LF-F01



LF-F02



LF-F03



LF-F04

Standard Function

Function name	Function elucidation
VVVF drive	Motor rotating speed can be precisely adjusted to get smooth speed curve in lift start, travel and stop and gain the sound comfort.
VVVF door operato	Motor rotating speed can be precisely adjusted to get the more gentle and sensitive door machine start / stop.
Automatic pass without stop	When the car is crowded with the passengers or the load is closeto preset value, the car will automatically pass the calling landing in order to keep maximum travel efficiency.
Reopen with hall ca	In the door shutting process, press reopen with hall call button can restart the door.
Express door closin	When the lift stops and opens the door, press door-shut button, the door will be closed immediately.
Car stops and door ope	The lift decelerates and levels, the door only opens after the lift comes to a complete stop.
Photocell protectio	In the door open and shut period, infrared light that covers the whole door height is used to probe the door protection device of both the passengers and objects.
Overload holding stop	When the car is overload, the buzzer rings and stops the lift in the same floor.
Inspection operatio	When the lift enters into Inspection Operation, the car travels at inching running.
Fault self-diagnos	The controller can record 62 latest troubles so as to quickly remove the trouble and restore the lift operation.
Repeated door closing	If the lift can not close the door due to certain obstacle or interference, the lift will reopen or re-shut the door until sundries are eliminated.
Up/down over-run an final limit protection	The device can effectively prevent from the lift' s surging to the top or knocking the bottom when it is out of the control. It results in the more safe and reliable lift travel.
Down over-speed protection device	When the lift downs 1.2 times higher than the rated speed, this device will automatically cut off control mains, stop the motor running so as to stop lift down at over-speed. If the lift continues to down at over-speed, and the speed is 1.4 times higher than rated speed, safety tongs act to force the lift stop in order to ensure the safety.
Manual rescue in power failure	When the lift suddenly stops at none door zone due to power failure or other reasons, the lift can enter into the host position through the base floor inspection door, then we can travel the car to the door zone through taking off the brake and manual jiggng mode, finally we use triangle key to unlock and release the passengers.
Micro-touch button for car call and hall call	Novel micro-touch button is used for operation panel command button in the car and landing calling button.
Floor and direction indicator car	The car shows the lift floor location and current travel direction.
Floor and direction indicator in hall	The landing shows the lift floor location and current travel direction.
Car ventilation, light automatic shut off	If there is no calling or command signal within the stipulated time, the car fan and lighting will be automatically closed in order to save the energy.
Remote shut-off	The lift can be called to main landing (after finishing the service) through the key switch and automatically exists the service.

Optional Function

Function name	Function elucidation
Leveling when power failure	In normal power failure, the chargeable battery supplies the lift power. The lift drives to the nearest landing.
Voice announcer	When the lift normally arrives, voice announcer informs the passengers about the relevant information
Camera function in the car	The camera is installed in the car to monitor the car conditions.

FREIGHT ELEVATOR

It can competently bear heavy loads

Elevator heavy burden with giant power; display meticulous care with carefulness; undertake majestic sceneries with stability; FUJILF Elevator elevator lifts heavy burden with great space. FUJILF Freight Elevator can provide safe, stable and highly efficient service in different places like factory, warehouse, shopping center, supermarket, airport and stations.

Note: Above design plotted by computer, which seems different from actual product.



LF-F01 Standard

Ceiling: LED light in painted steel sheet
 Ventilating mode: Circular fan
 Car wall/Car door: Painted steel sheet
 Illumination: LED lamp
 Door opening mode: 4-panels center opening
 Car floor: Checkered plate
 Sill: Aluminum alloy

Various door opening modes



Side opening



Center opening



4 panel center opening type



Up-sliding

CAR ELEVATOR

It escorts your car throughout the journey

FUJILF gives a full use of the years' automobile manufacture technology. It applies the highly well-developed variable voltage, variable frequency control technology, precise speed governor control. It avoids noise and car-shake due to enlarged burden of traction system because of uneven encountered force to the car. It optimizes the characteristics of this series to the greatest extent.



ESCALATOR

It leads the smooth and peaceful travel

It decorates the space by the well-arranged layout. It pays due contribution to the city traffic through its powerful transport strength. FUJILF Escalator series has multiple advantages such as firm and durable, safe and reliable, peaceful running, low carbon environment protection etc. It perfectly combines with the concentrated passenger flow public places such as the bus station, wharf, airport, underground passageway etc.



Frequency conversation of low speed

Escalator operates steadily with frequency conversation, if there is no passenger in designed period, it would slow the speed, and the energy saving efficiency above 60%.



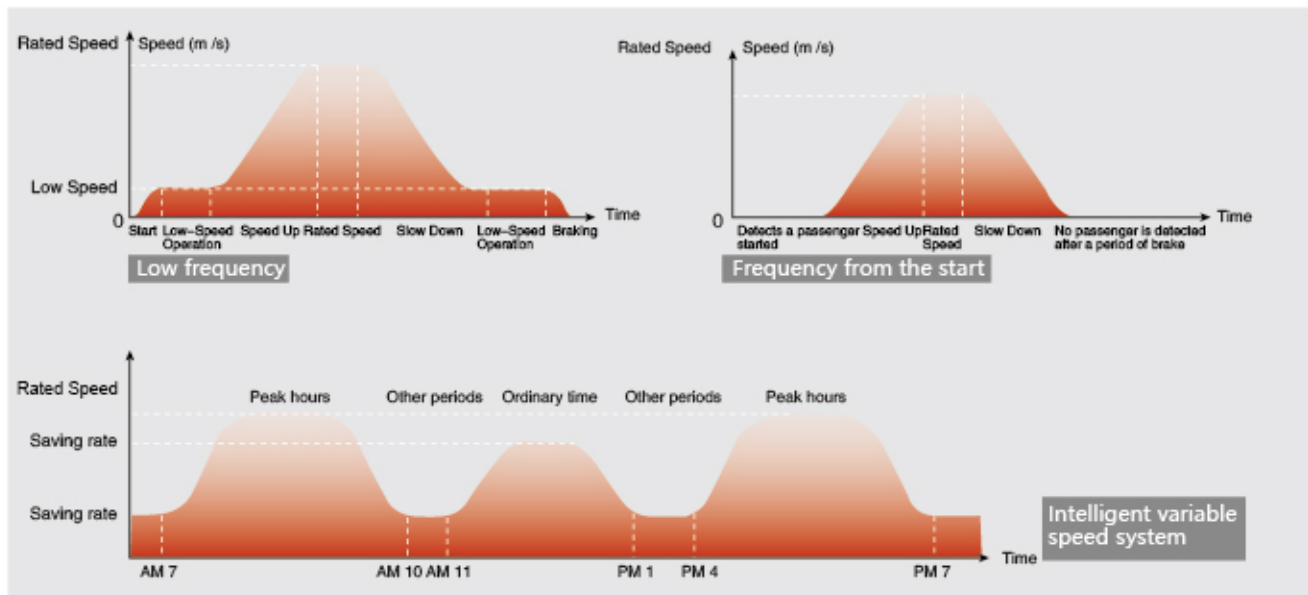
Frequency conversation of self-starting

If there is no passenger at the escalator, then it would slow down the speed for certain time and then stop, when entrance light eyes detect passengers coming then the escalator restarts, the energy saving efficiency above 70%.



Intelligent variable speed system

Control system automatic judges escalator load situation through sensor to shift speed timely, reduces the energy consumption greatly and offers the most comfortable travelling experience for passengers. The energy saving efficiency above 80%.



MOVING WALK

It peacefully wonders around in busy city

FUJILF Moving walk applies the novel, popular and very innovative streamline design. It grandly, peacefully and gracefully safeguards every corner in the city. It busily conveys various passengers. It keeps low key. It always plays a costar for the building. While its great strength transport capacity shows the advanced technology, the reliable transport, the comfortable travel. FUJILF moving walk fulfills the safe, energy-saving, environment-protection, low carbon green running by the innovative technology that leads the elevator industry. It boosts the sustainable city developments.



Compact structure, the larger design freedom

FUJILF Moving walk applies short tread design. Thanks to sharply reduced space span as well as the more compact structure, it can save more and more space for the building. It creates the vast generality and flexibility. It can easily be harmonized with various buildings.

Colorful decoration providing more charming space

FUJILF Moving walk handrail is ample in color and novel in style. It can satisfy the individual requirements in various places. The frontline panel applies the stamped pattern. It is rich in 3D sense. It is anti-skid. It appears more elegant and attractive.



DECORATING

Colorful and beautiful design

Handrail Color



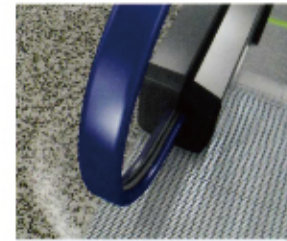
Black (Standard)



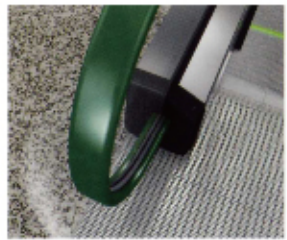
Black with a little white (Optional)



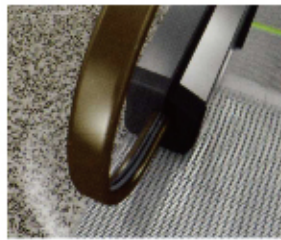
Red (Optional)



Blue (Optional)



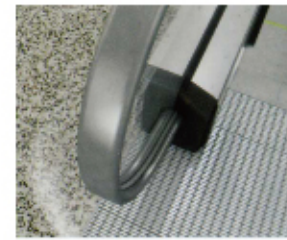
Green (Optional)



Bronze (Optional)



Light brown (Optional)



Gray (Optional)

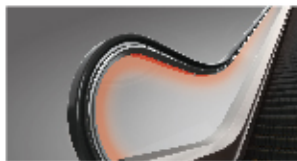
Handrail Lighting



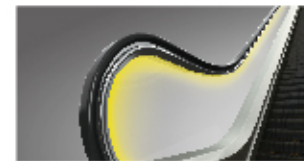
White (Optional)



Blue (Optional)

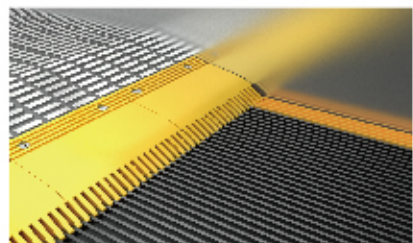


Red (Optional)

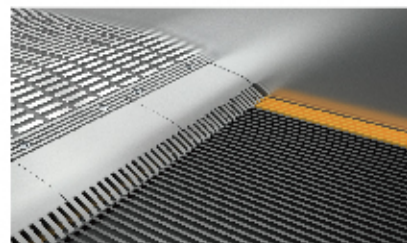


Yellow (Optional)

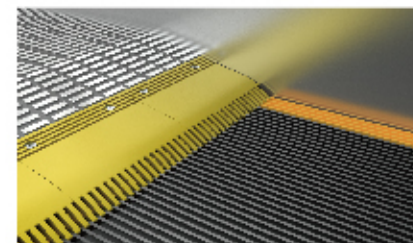
Comb Teeth



Yellow Plastic (Standard)



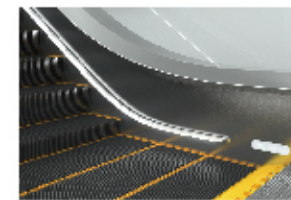
Aluminum (Optional)



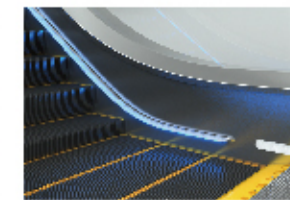
Aluminum Surface Yellow Paint (Optional)

Note: Pictures have been drawn by computer. It might be slightly different from actual colors. Please take real product as criterion.

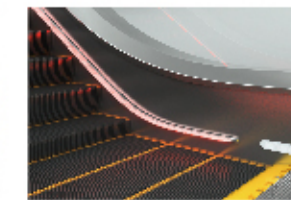
Skirting Panel Lighting



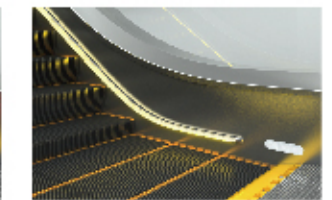
White (Optional)



Blue (Optional)



Red (Optional)



Yellow (Optional)

Baseboard color



Colorless transparent (standard)



Gray (Optional)



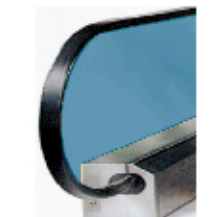
Bronze (Optional)



Yellow (Optional)

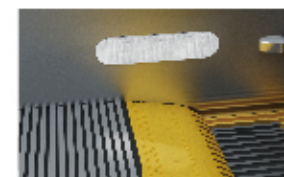


Red (Optional)



Blue (Optional)

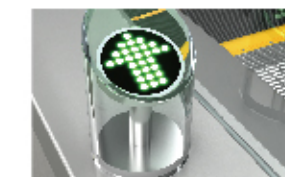
Comb Teeth Lighting



White LED (Optional)



Yellow LED (Optional)



Transparent Plastic LED Display (Optional)



Black Plastic Matrix Display (Optional)

Running Direction Indicator

Frontier Board



Aluminum Patch (Standard)



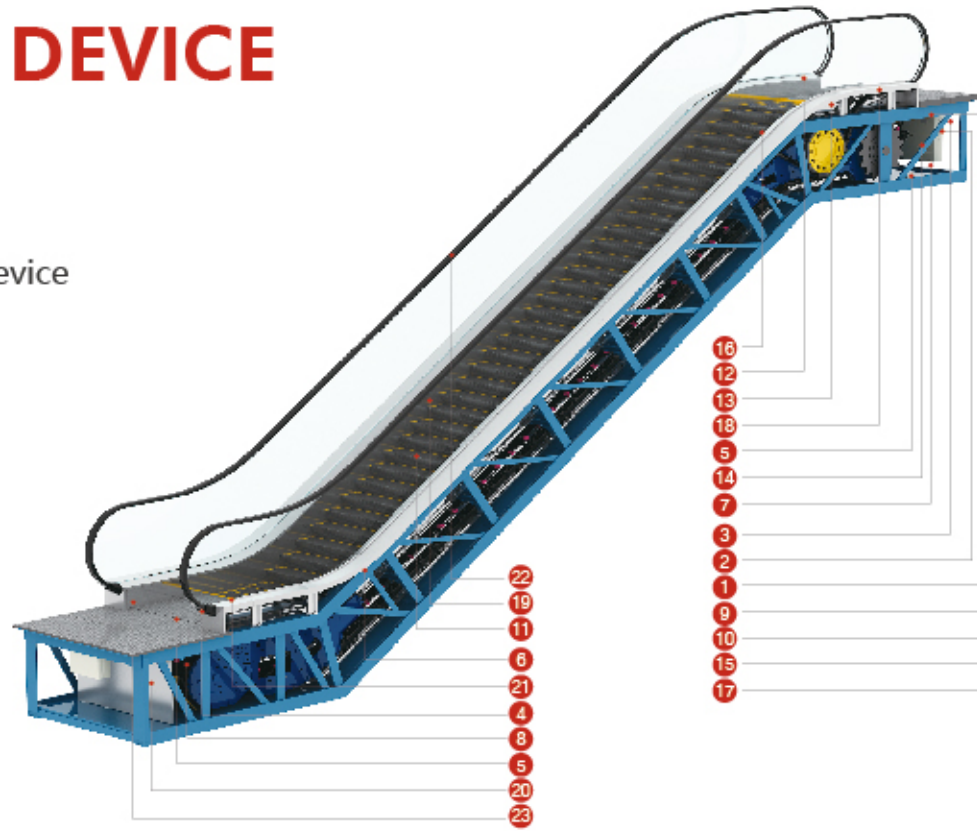
Stainless Steel Striped Patch (Optional)



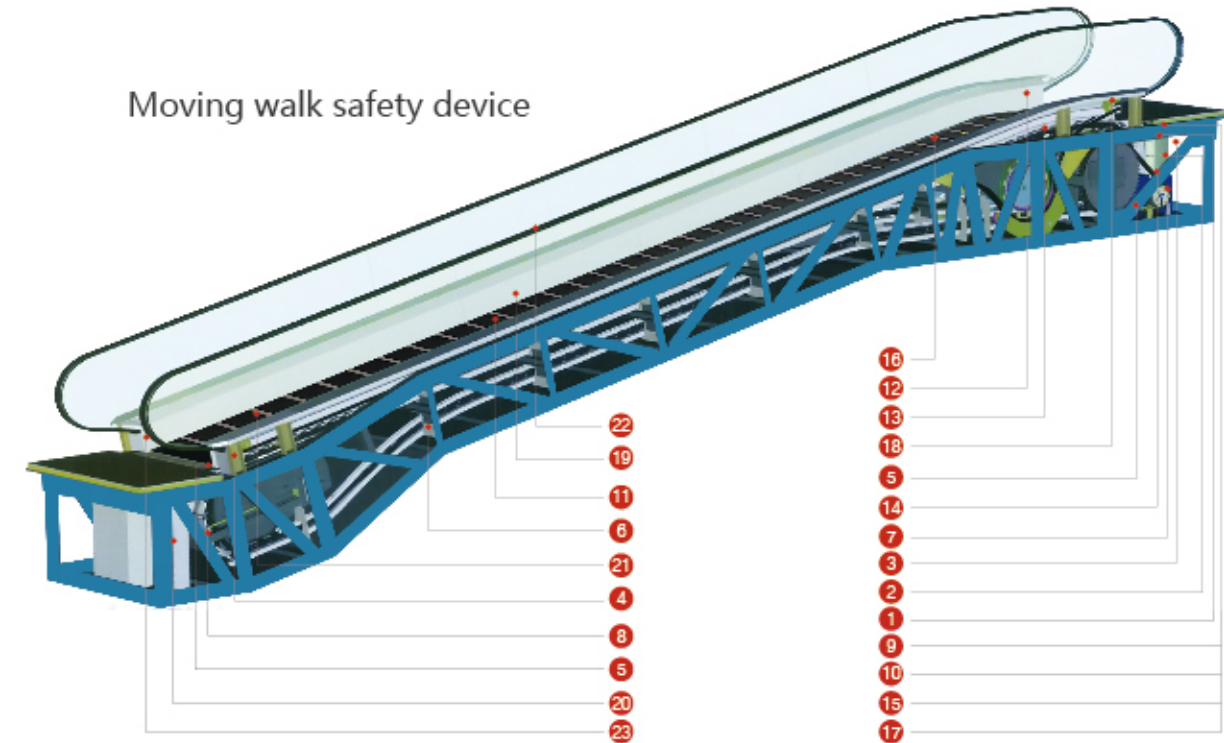
Stainless Steel Square Patch (Optional)

SAFETY DEVICE

Escalator safety device



Moving walk safety device



Standard function

Description of functions

1. Lack of phase, error phase protection	If lack of phase or error phase has been checked out, the escalator (moving walkway) will automatically stop the operation.
2. Motor over-load protection	When the current exceeds 15% of the current rating, the escalator will automatically stop the operation.
3. Electrical appliance loop protection	It offers the automatic circuit disconnecting device to protect the circuit and mains components of the escalator (moving walkway).
4. Handrail inlet protection	When some foreign substance has been clipped in the handrail inlet, the escalator (moving walkway) will automatically stop the operation.
5. Comb plate safety device	When some foreign substance has been clipped in or between the combs, the escalator (moving walkway) will automatically stop the operation.
6. Step sagging protection device	When there is abnormal step bending, the escalator (moving walkway) will stop the operation before the step entering into the comb plate.
7. Broken drive-chain safety device	when the drive-chain has been over-stretched or it is broken, the escalator (moving walkway) will automatically stop the operation.
8. Broken step chain protection	when the step (plate) chain has been over-stretched or it is broken, the escalator (moving walkway) will automatically stop the operation.
9. Over-speed protection	When there is over-speed to the escalator (moving walkway), it will automatically stop the operation.
10. Direction reversal protection	when it comes the unintentional reversal of the direction of travel, the escalator (moving walkway) will automatically stop the operation.
11. Security line	The yellow synthetic resin security line is located in the front position and two sides of the escalator tread so that the passengers will not tread in-between the edge of the adjacent step and the lift group lengthened skirt panel. The security line on both sides of the step is higher than the tread surface. (The moving walkway offers the selective yellow spray-painted security line.)
12. Emergency stop button	When the button has been pressed down, the escalator (moving walkway) will stop the operation.

13. Skirt panel protection	When some foreign substance has been clipped in between the skirt panel and the step, the escalator (moving walkway) will automatically stop the operation.
14. Brake protection	When the electric force falls short of supply or it acts any of the safety device, the brake function goes into effect by the safety device through the spring resilience action. In this way, the escalator (moving walkway) stops the operation.
15. Safety inspection switch	It is a safety device to prevent from the escalator starting during the inspection and maintenance.
16. Step illumination	Illumination exists in the upper and lower ends of the escalator, in the lower part of the step in order to remind the passengers of the security matters.
17. Alarm bell starting device	The alarm bell rings when it starts the escalator in order to remind the passengers of the security matters.
18. Control device for handrail breakage	When the handrail is broken, the escalator will automatically stop the operation.
19. Skirt panel brush	The brush that has been installed between the skirt panel and the step will prevent the passengers from touching the skirt panel. (It is not merely restricted to the escalator.)

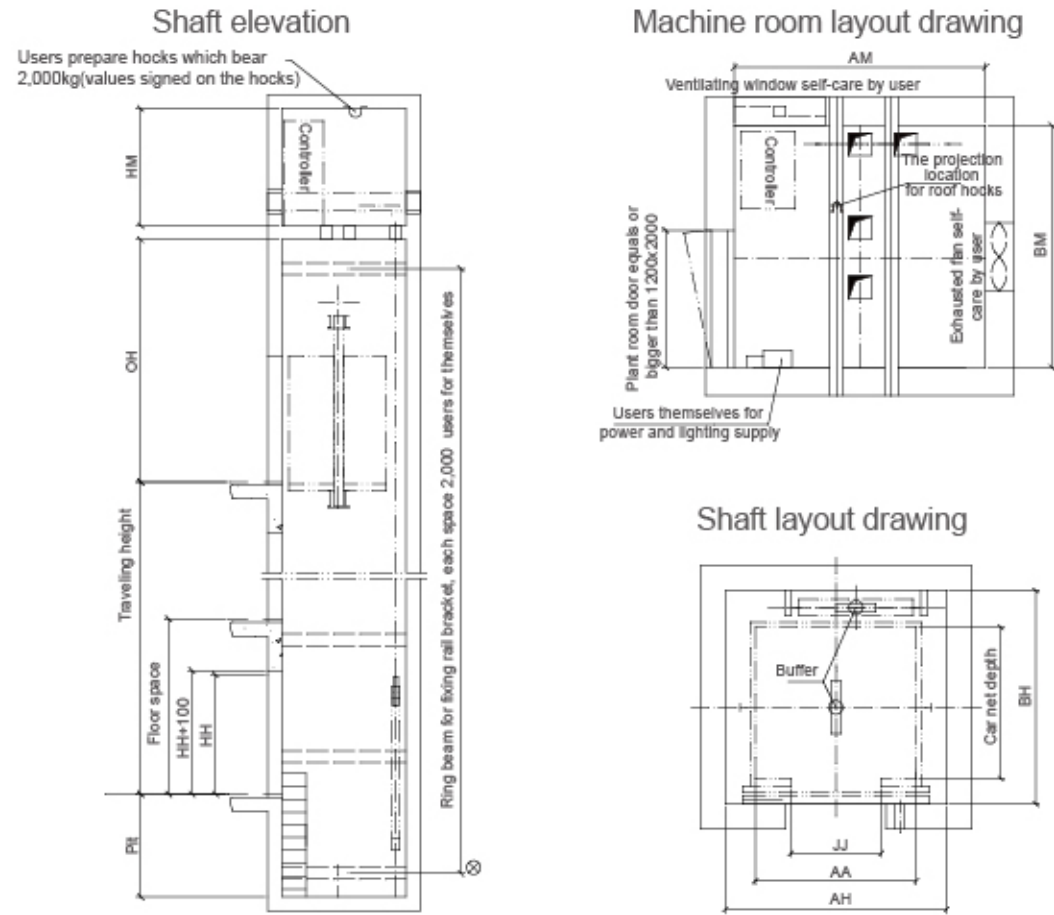
Option functions

Description of functions

20. VVVF variable frequency energy-saving system	When chooses the frequency converter, it can effectively reduce the energy consumption.
21. Comb illumination	The illumination has been installed in the skirt panel near the comb plate. It offers the lighting for the step and the comb plate. It is more convenient for the passengers to up and down the escalator.
22. Handrail illumination	The handrail illumination has been installed in the handrail frame. The gentle light adds charm to the running escalator.
23. Automatic start / stop	The infrared ray sensor which is near the floor plate can detect the passenger that enter into the floor plate. Then it will automatically start the operation. After all the passengers leave, it will automatically stop the operation again in order to save the energy loss. Scanning sensor and traditional guide rod are available for your choice.

SMALL MACHINE ROOM ELEVATOR

Construction Layout Drawing



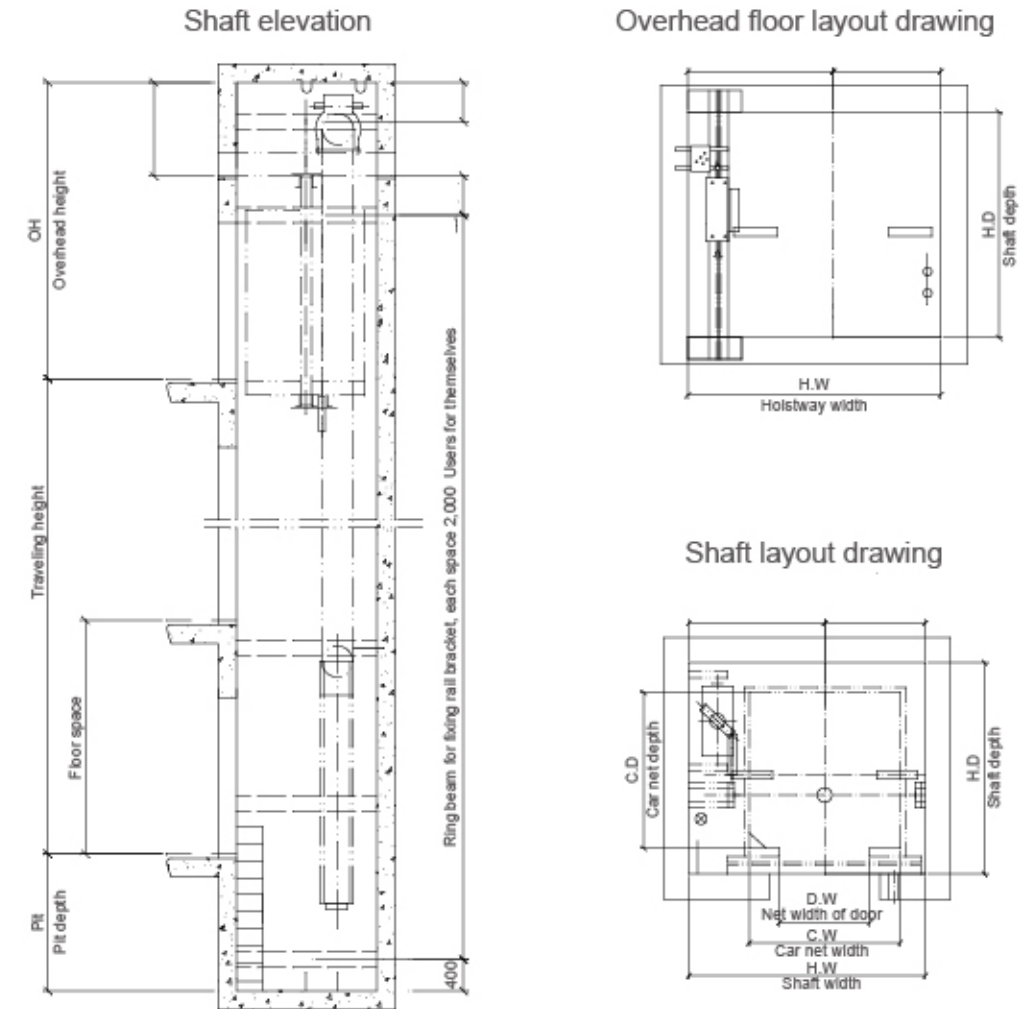
Small Machine Room Elevator Specifications

Persons	Rated capacity (kg)	Rated speed (m/s)	Net size of car (mm)		Shaft size (mm)			Machine room size (mm)	
			C.W x C.D	2P Central opening	H.W x H.D	OH	PIT	MR.W x MR.D	MR.H
6	450	1.0	1100x1100	700x2100	1700x1800	4100	1500	1700x1800	2500
		1.5				4200	1550		
		1.75				4300	1600		
8	630	1.0	1400x1100	800x2100	1900x1800	4100	1500	1900x1800	2500
		1.5				4200	1550		
		1.75				4300	1600		
10	800	1.0	1400x1350	800x2100	1900x2050	4200	1500	1900x2050	2500
		1.5				4300	1550		
		1.75				4400	1600		
		2.0				4500	1700		
		2.5				4700	1900		
13	1000	1.0	1100x2100	900x2100	2100x2100	4200	1500	2100x2100	2500
		1.5				4300	1550		
		1.75				4400	1600		
		2.0				4500	1700		
		2.5				4700	1900		
15	1150	1.0	1800x1400	1100x2100	2400x2150	4200	1500	2400x2150	2500
		1.5				4300	1550		
		1.75				4400	1600		
		2.0				4500	1700		
16	1250	1.0	1950x1400	1100x2100	2500x2150	4300	1500	2500x2150	2500
		1.5				4400	1550		
		1.75				4500	1600		
		2.0				4600	1700		
18	1350	1.0	1950x1500	1100x2100	2500x2250	4300	1500	2500x2250	2500
		1.5				4400	1550		
		1.75				4500	1600		
		2.0				4600	1700		
21	1600	1.0	1950x1750	1100x2100	2500x2500	4300	1500	2500x2500	2500
		1.5				4400	1550		
		1.75				4500	1600		
		2.0				4600	1700		
		2.5				4800	1900		

Note: Only for reference, final manufacture please follow contract.

MACHINE ROOMLESS ELEVATOR

Construction Layout Drawing



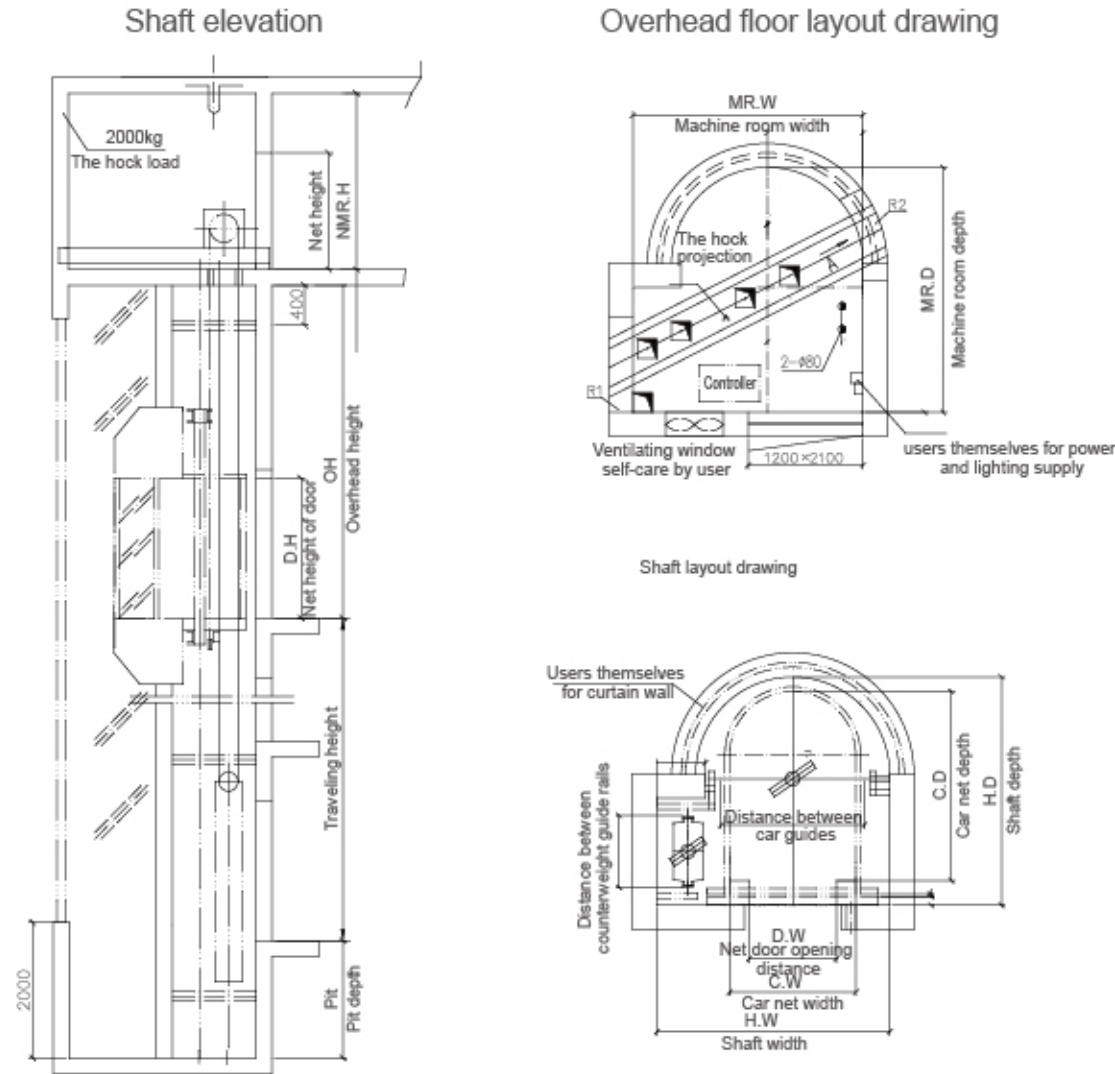
Machine Roomless Elevator Specifications

Persons	Rated capacity (kg)	Rated speed (m/s)	Net size of car (mm)		Shaft size (mm)		
			C.W x C.D	2P Central opening	H.W x H.D	OH	Pit
6	450	1.0	1400x850	800x2100	2250x1500	4200	1500
8	630	1.0	1400x1100	800x2100	2250x1720	4200	1500
		1.5/1.75				4400	1600
10	800	1.0	1400x1350	800x2100	2250x1900	4200	1500
		1.75				4400	1600
		2.0				4800	1800
		2.5				4800	2000
13	1000	1.0	1500x1550	900x2100	2350x2150	4200	1500
		1.5/1.75				4400	1600
		2.0				4800	1800
		2.5				4800	2000
16	1250	1.0	1800x1500	1000x2100	2850x2100	4200	1600
		1.5/1.75				4300	1700
		2.0				4400	1800
		2.5				4900	1800
21	1600	1.0	1900x1800	1100x2100	2850x2400	4500	1500
		1.5/1.75				4700	1600
		2.0				4900	1800
		2.5				5100	2000

Note: Only for reference, final manufacture please follow contract.

SEMICIRCLE PANORAMIC ELEVATOR

Construction Layout Drawing



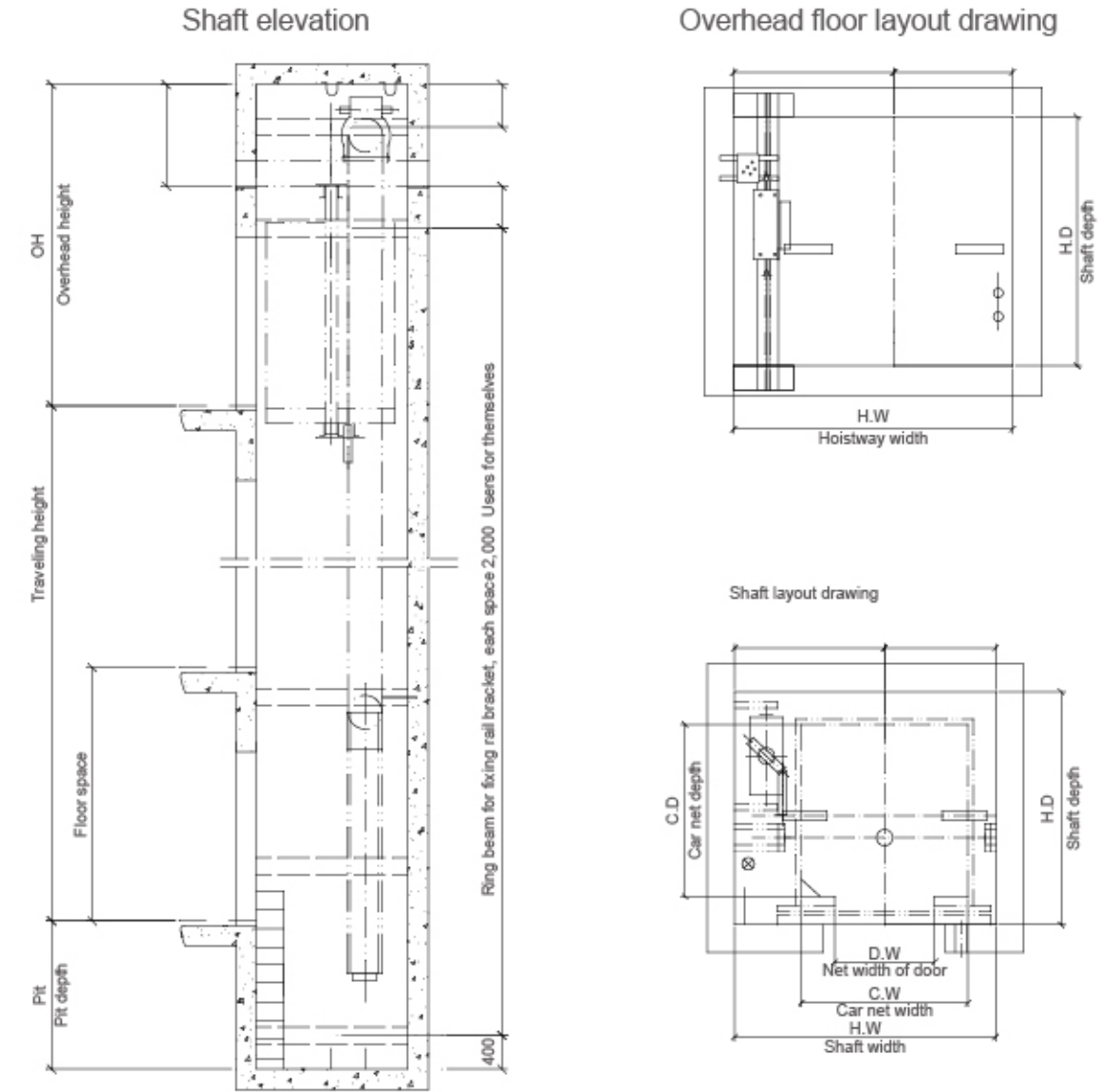
Semicircle Machine Room or Machine Roomless Elevator Specifications

Persons	Rated capacity (kg)	Rated speed (m/s)	Net size of car (mm)	Net size of door (mm) D.WxD.H	Shaft size (mm)			Machine room size (mm)	
			C.WxC.D	2P center opening	H.WxH.D	OH	Pit	MR.WxMR.D	MR.H
10	800	1.0	1200x1700	800x2100	2300x2355	4400	1800	2300x2200	2500
		1.5/1.75							
		2.0							
		2.5							
13	1000	1.0	1300x1800	900x2100	2400x2535	4800	1800	2300x2300	2500
		1.5/1.75							
		2.0							
		2.5							
15	1250	1.0	1400x2000	900x2100	2500x2600	4800	1800	2500x2500	2500
		1.5/1.75							
		2.0							
		2.5							
18	1350	1.0	1500x2150	900x2100	2550x2650	4800	1800	2550x2650	2500
		1.5/1.75							
		2.0							
		2.5							
21	1600	1.0	1600x2250	1100x2100	2700x2750	4800	1800	2700x2750	2500
		1.5/1.75							
		2.0							
		2.5							

Note: Only for reference, final manufacture please follow contract.

SQUARE PANORAMIC ELEVATOR

Construction Layout Drawing



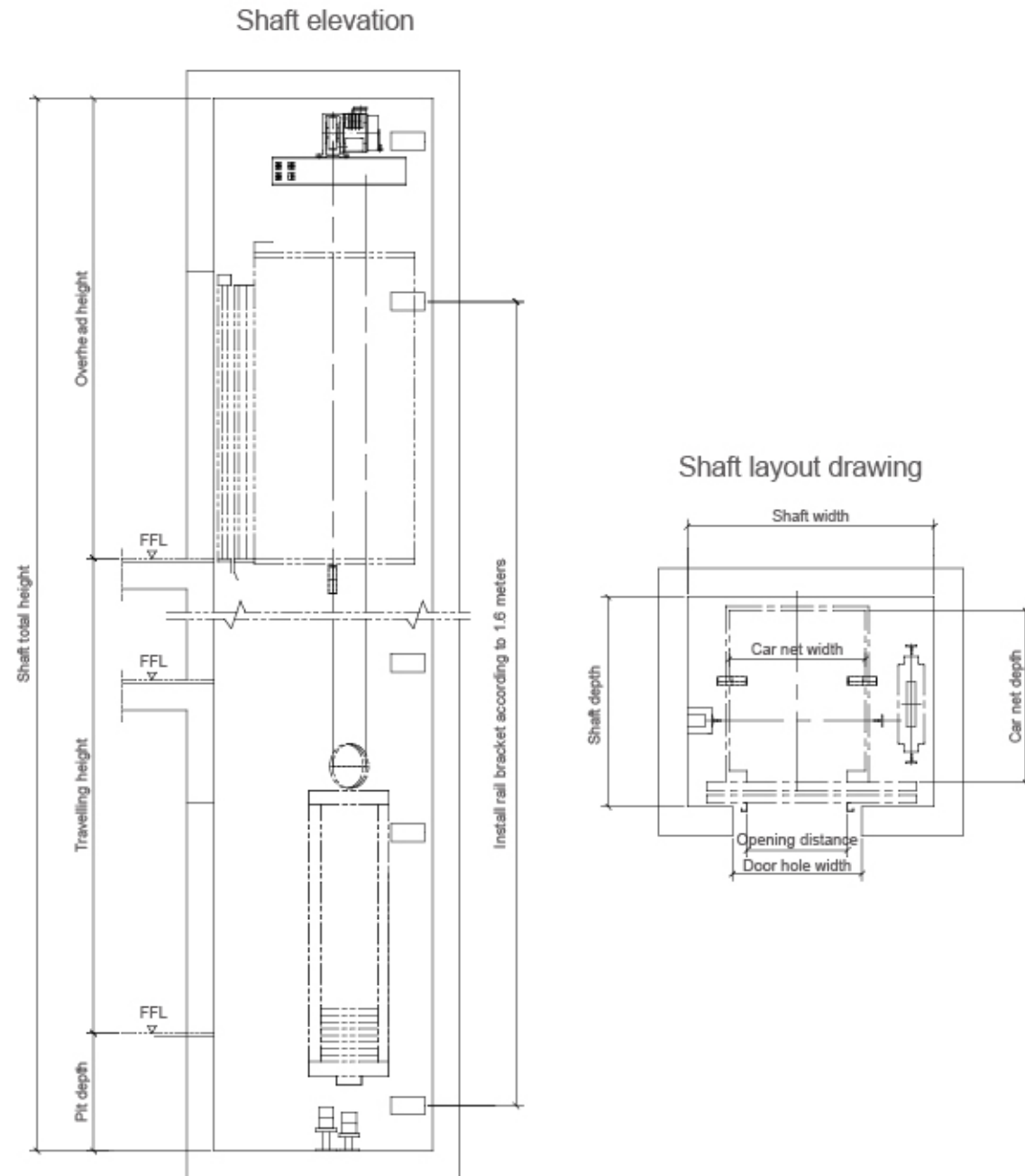
Square Machine Room, Machine Roomless Panoramic Elevator Specifications

Persons	Rated capacity (kg)	Rated speed (m/s)	Net size of car (mm)	Net size of door (mm) D.WxD.H	Shaft size (mm)		
			C.W x C.D	2P Central opening	H.W x H.D	OH	Pit
10	800	1.0	1200x1700	800x2100	2400x2200	5000	1800
13	1000	1.0	1300x1800	800x2100	2500x2300	5000	1800
15	1150	1.0	1400x2000	900x2100	2550x2500	5000	1800
18	1350	1.0	1500x2150	900x2100	2600x2650	5000	1800
21	1600	1.0	1600x2250	1100x2100	2700x2750	5000	1800

Note: Only for reference, final manufacture please follow contract.

VILLA ELEVATOR

Construction Layout Drawing



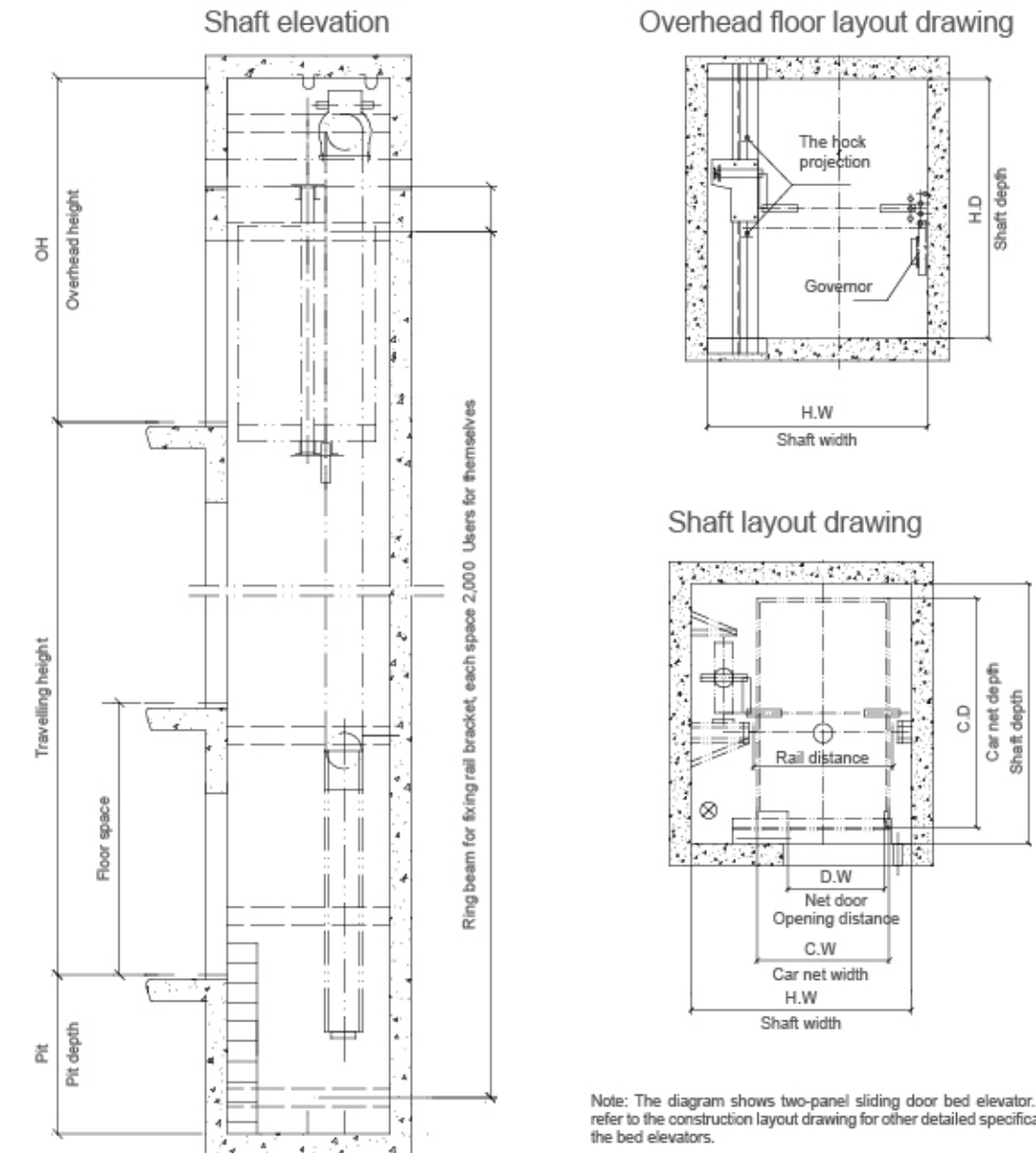
Villa Elevator Specifications

Persons	Rated capacity (kg)	Rated speed (m/s)	Net size of car (mm)	Net size of door (mm)	Shaft size (mm)		
			C.W x C.D	2P Central opening	H.W x H.D	OH	Pit
3	260	0.4	800x1150	600x2000	1450x1400	3000	500
4	320	0.4	950x1300	700x2000	1600x1600	3000	500
5	400	0.4	1100x1300	800x2000	1800x1600	3000	500

Note: Only for reference, final manufacture please follow contract.

BED ELEVATOR

Construction Layout Drawing



Note: The diagram shows two-panel sliding door bed elevator. Please refer to the construction layout drawing for other detailed specifications of the bed elevators.

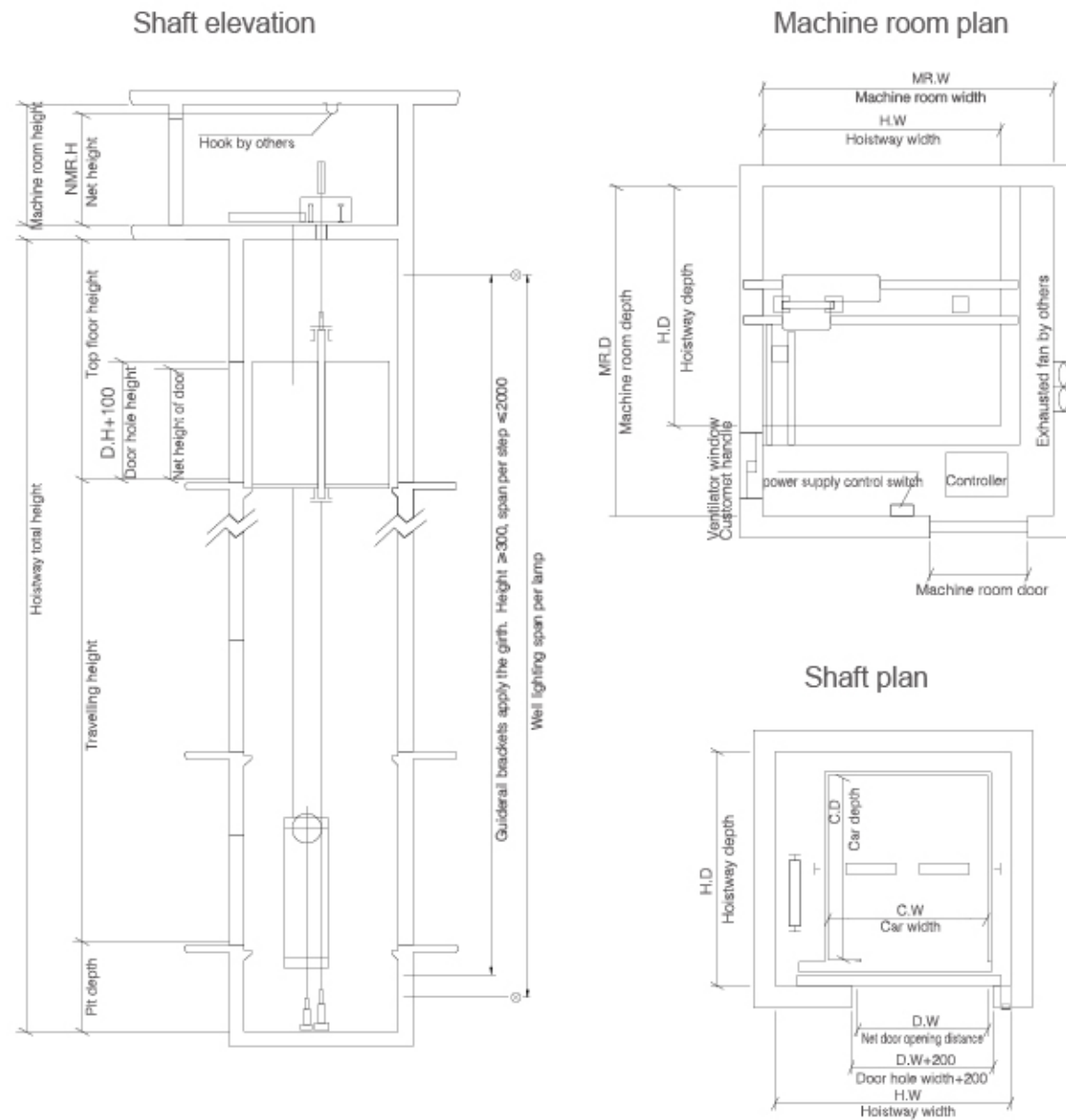
Machine Room/ Machine Roomless Bed Elevator Specifications

Persons	Rated capacity (kg)	Rated speed (m/s)	Net size of car (mm)	Net size of door (mm)	Shaft size (mm)			Machine room size(mm)	
			C.W x C.D	D.WxD.H	H.W x H.D	OH	Pit	MR.W x MR.D	MR.H
13	1000	1.0	1100x2100	1000x2100	2000x2600	4200	1700	2000x2600	2500
		1.5				4300	1750		
		1.75				4400	1800		
		2				4500	1900		
		2.5				4700	2000		
18	1350	1	1300x2300	1200x2100	2300x2800	4300	1700	2300x2800	2500
		1.5				4400	1750		
		1.75				4500	1800		
		2				4800	1900		
		2.5				4800	2000		
21	1600	1	1400x2400	1200x2100	2400x2900	4300	1700	2400x2900	2500
		1.5				4400	1750		
		1.75				4500	1800		
		2				4800	1900		
		2.5				4800	2000		

Note: Only for reference, final manufacture please follow contract.

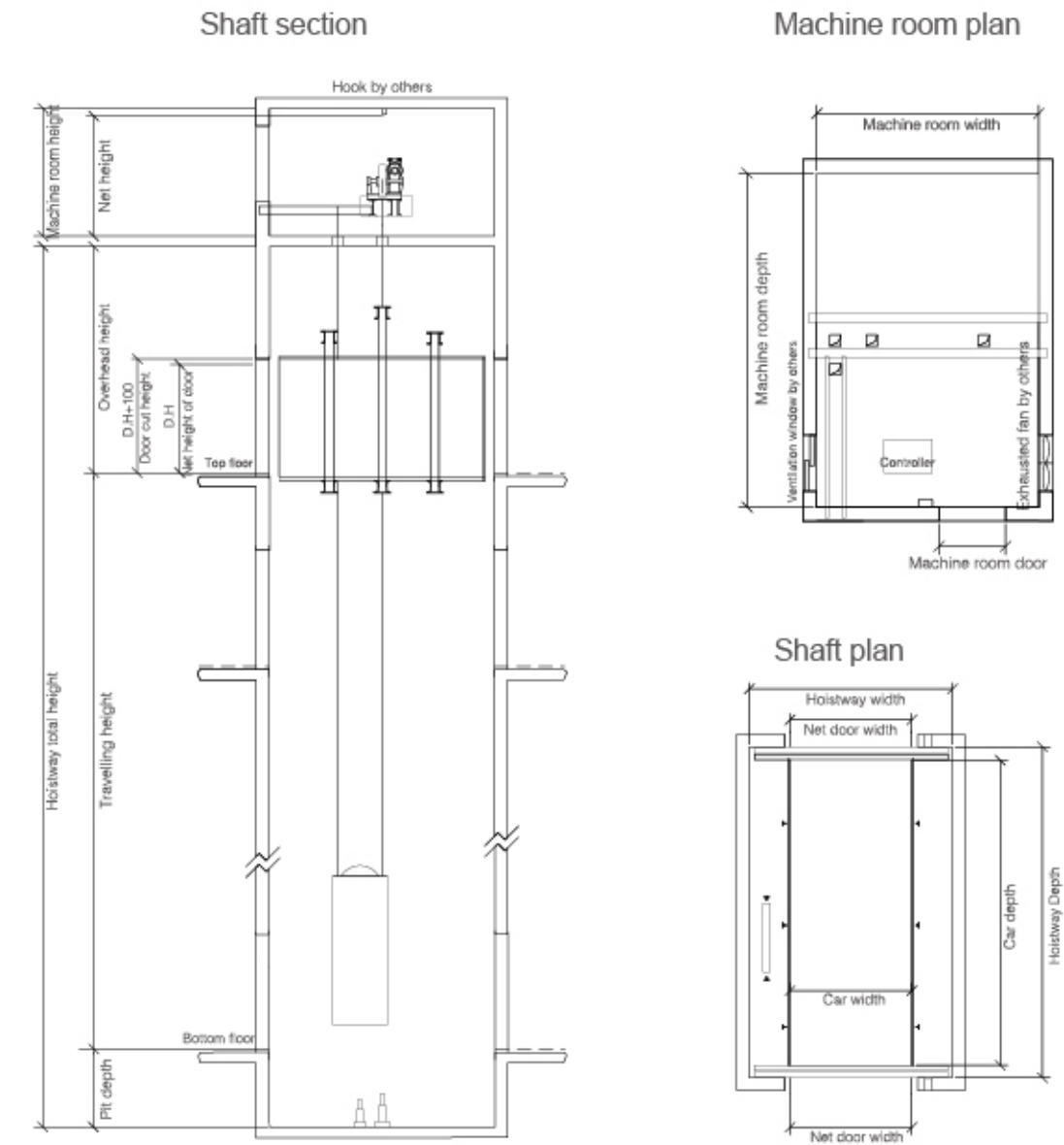
FREIGHT ELEVATOR

Construction Layout Drawing



CAR ELEVATOR

Construction Layout Drawing



Freight elevator Specifications

Model	Rated capacity (Kg)	Rated speed (m/s)	Rated power (Kg)	Net size of car (mm)			Net size of door D.WxD.H (mm)			Shaft size (mm)			Machine room size (mm)	
				C.WxC.D	2P telescopic opening	4P central opening	H.WxH.D	OH	Pit	MR.WxMR.D	MR.H			
THJS	1000	0.5	7.5	1400x1600	1100x2100	—	2400x2000	4200	1750	2400x2000	2300			
	1600	0.5	11	1500x2250	1300x2100	—	2500x2650	4200	1750	2500x2650	2300			
	2000	0.5	11	1500x2700	1300x2100	—	2500x3100	4200	1750	2500x3100	2300			
	3000	0.5	18.5	2000x2800	—	2000x2100	3400x3300	4200	1750	3400x3300	2300			
	4000	0.5	26	2000x3600	—	2000x2100	3500x4100	4300	1800	3500x4100	2500			
	5000	0.5	26	2400x3500	—	2400x2100	4000x4000	4300	1800	4000x4000	2500			

Note: Only for reference, final manufacture please follow contract.

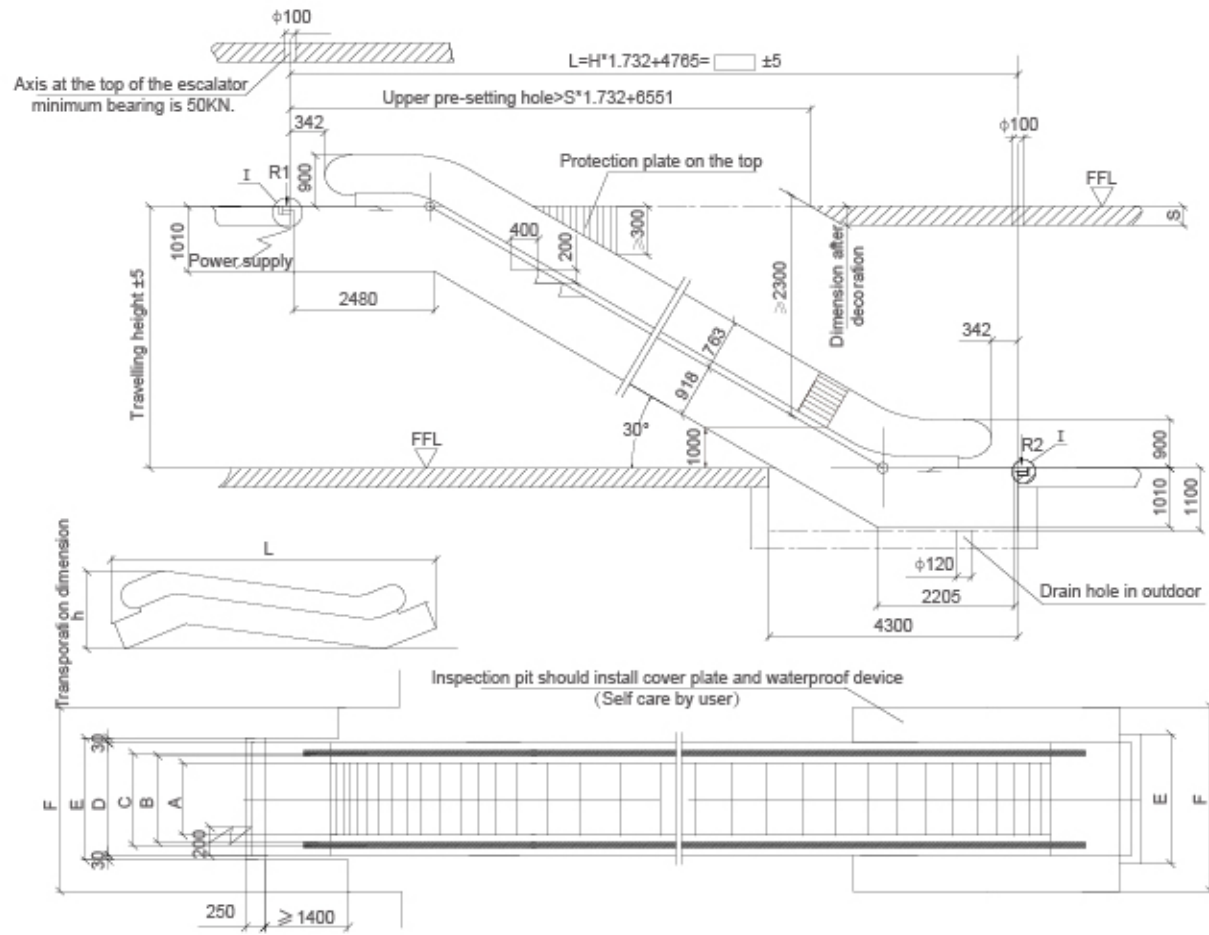
Car elevator Specifications

Rated capacity (Kg)	Rated speed (m/s)	Net size of door (mm)	Net size of car (mm)		Shaft size (mm)		Machine room size (mm)			Top floor height (mm)	Pit depth (mm)	Max traveling height (mm)
			C.W	C.D	H.W	H.D	MR.W	MR.D	MR.H			
3000	0.25/0.5	2500 x 2400	2500	6000	4150	6650	4150	6650	3000	5300	1700	15/30
5000	0.25/0.5	2600 x 2400	3400	6800	4700	7450	4700	7450	3000	5300	1700	15/30

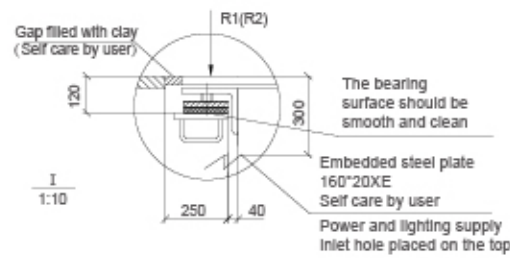
Note: Only for reference, final manufacture please follow contract.

30° ESCALATOR

Construction Layout Drawing



Motor capacity (KW)	Traveling height (Step width 1000)		Traveling height (Step width 800)		Traveling height (Step width 600)	
	1000-3300	5.5	1000-3500	5.5	1000-3700	5.5
1000	1000	1158	1238	1600	1660	2310
800	800	958	1038	1400	1460	2110
600	600	758	838	1200	1260	1910
Step width	A	B	C	D	E	F
	1000	800	600	3000	2780	2580
Model	Traveling height mm	Net weight KN	Bearing capacity KN	Transporation dimension		
				h	l	
FML(600)-30 (3600Person/h) Speed: 0.5m/s	3000	57	46	41	2750	10900
	3500	60	49	44	2780	11890
	4000	64	52	47	2810	12880
	4500	68	56	50	2830	13870
	5000	71	59	53	2840	14860
	5500	75	62	56	2860	15850
FML(800)-30 (4800Person/h) Speed: 0.5m/s	3000	59	52	47	2750	10900
	3500	63	56	50	2780	11890
	4000	67	60	54	2810	12880
	4500	71	64	57	2830	13870
	5000	74	68	60	2840	14860
	5500	78	72	64	2860	15850
FML(1000)-30 (6000Person/h) Speed: 0.5 m/s	3000	63	59	53	2750	10900
	3500	67	64	57	2780	11890
	4000	71	68	61	2810	12880
	4500	75	73	65	2830	13870
	5000	83	79	71	2840	14860
	5500	87	84	75	2860	15850

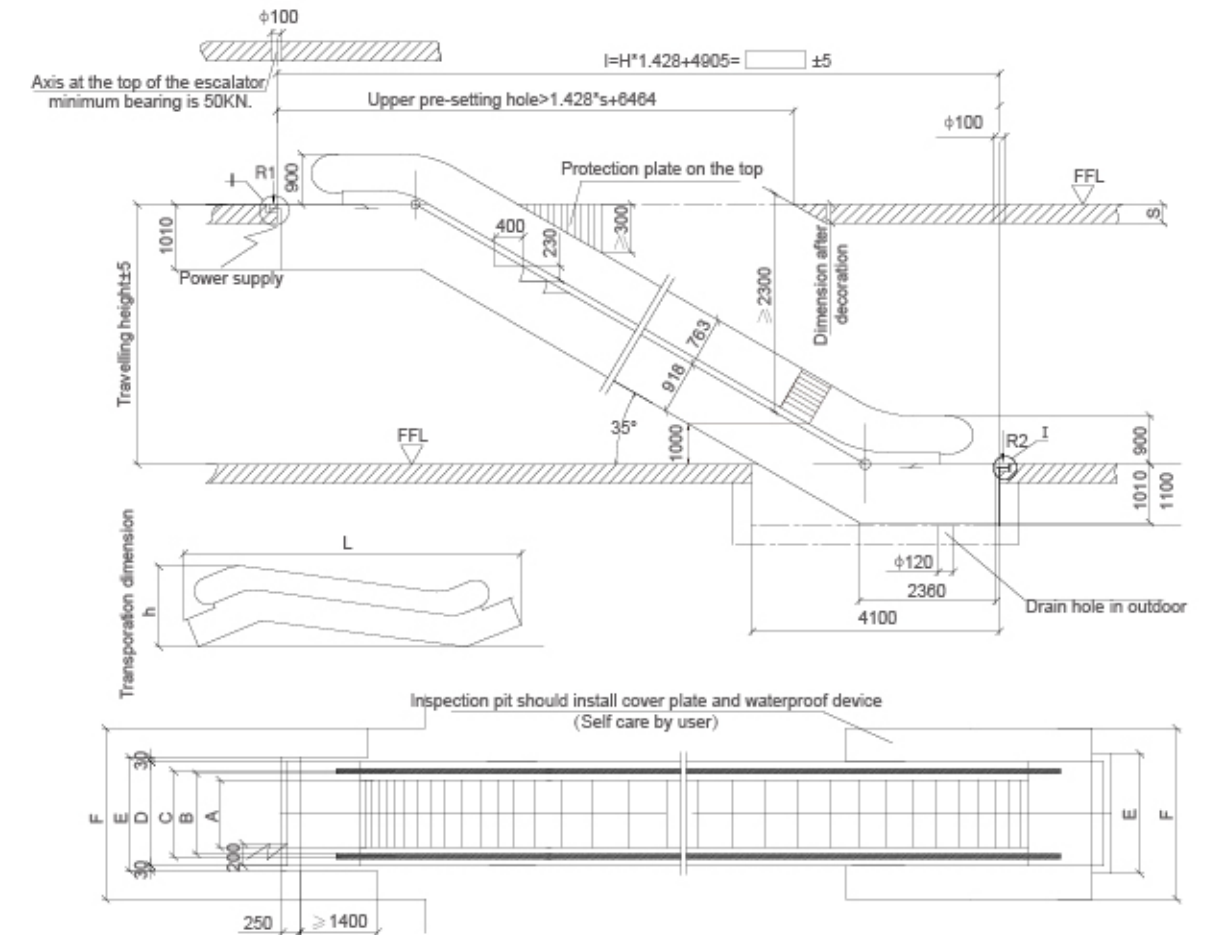


Instruction

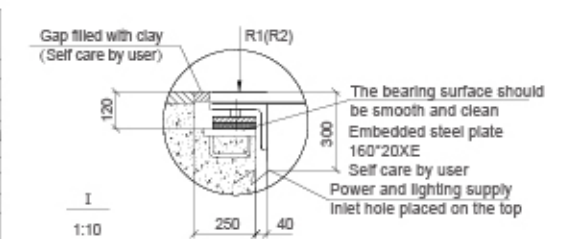
1. When the escalator to be installed above the second floor. Don't have a pit. Layout drawing must be matched between up and down.
2. Keep the sufficient space at both EXIT and ENTRANCE of escalator. The width must be less than 1238. The depth from handrail belt reversed end to the front obstacle must be not less than 2500.
3. Space between handrail belt of escalator and obstacle must be not less than 500.
4. Motor AC 380 V 50 HZ. See in the table.
5. By the user to provide a grounding resistance of less than 4 ohms.
6. Provide by user to the main switch of the power requirements of 3 phases 5 wires.
7. All the dimensions are measured by MM.

35° ESCALATOR

Construction Layout Drawing



Motor capacity (KW)	Traveling height (Step width 1000)		Traveling height (Step width 800)		Traveling height (Step width 600)	
	1000-3500	5.5	1000-3700	5.5	1000-3900	5.5
1000	1000	1158	1238	1600	1660	2310
800	800	958	1038	1400	1460	2110
600	600	758	838	1200	1260	1910
Step width	A	B	C	D	E	F
	1000	800	600	3000	2780	2580
Model	Traveling height mm	Net weight KN	Bearing capacity KN	Transporation dimension		
				h	l	
FML35/600 (3600Person/h) Speed: 0.5m/s	3000	54	43	39	2850	10180
	3500	57	46	41	2890	11030
	4000	60	49	44	2920	11890
	4500	64	52	46	2940	12750
	5000	67	54	49	2970	13610
	5500	70	57	51	2980	14470
FML35/800 (4800Person/h) Speed: 0.5m/s	3000	56	49	44	2850	10180
	3500	60	52	47	2890	11030
	4000	63	56	50	2920	11890
	4500	66	59	53	2940	12750
	5000	70	62	56	2970	13610
	5500	73	65	59	2980	14470
FML35/1000 (6000Person/h) Speed: 0.5 m/s	3000	60	56	50	2850	10180
	3500	64	60	53	2890	11030
	4000	67	64	57	2920	11890
	4500	71	67	60	2940	12750
	5000	74	71	64	2970	13610
	5500	82	77	69	2980	14470



Instruction

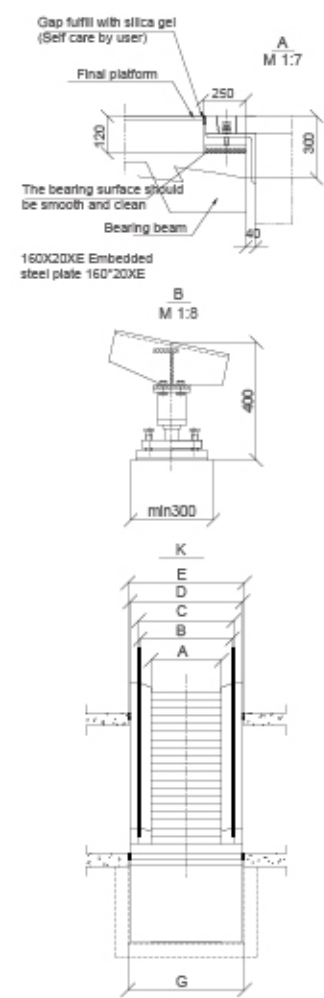
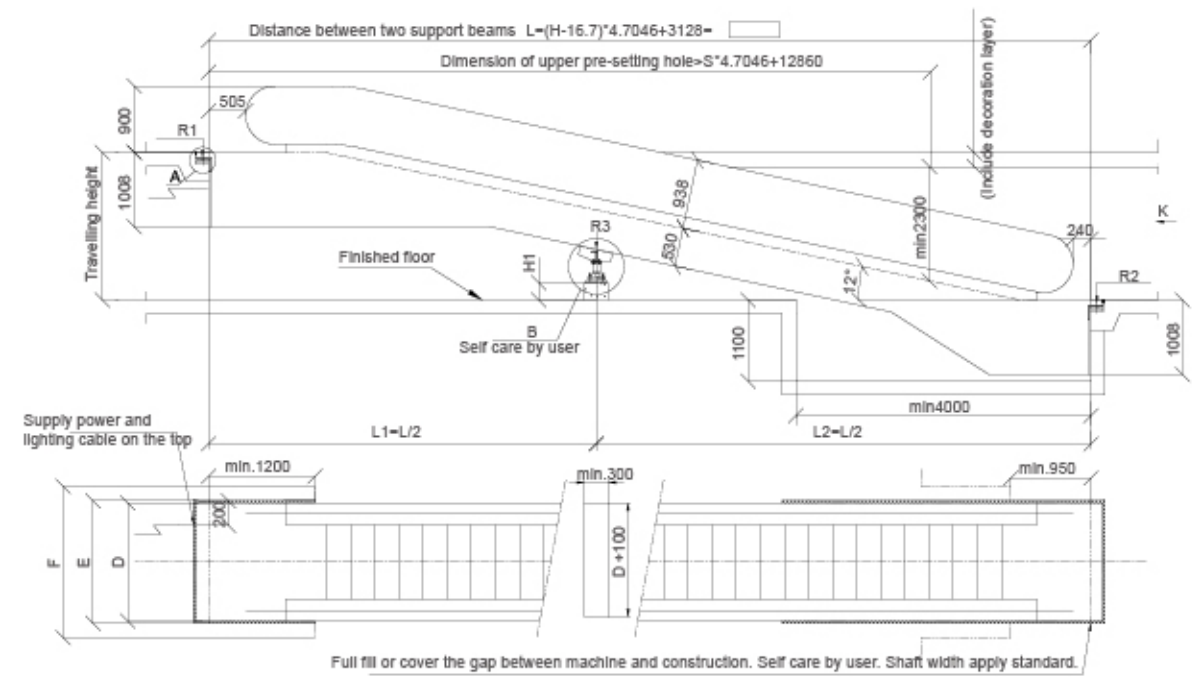
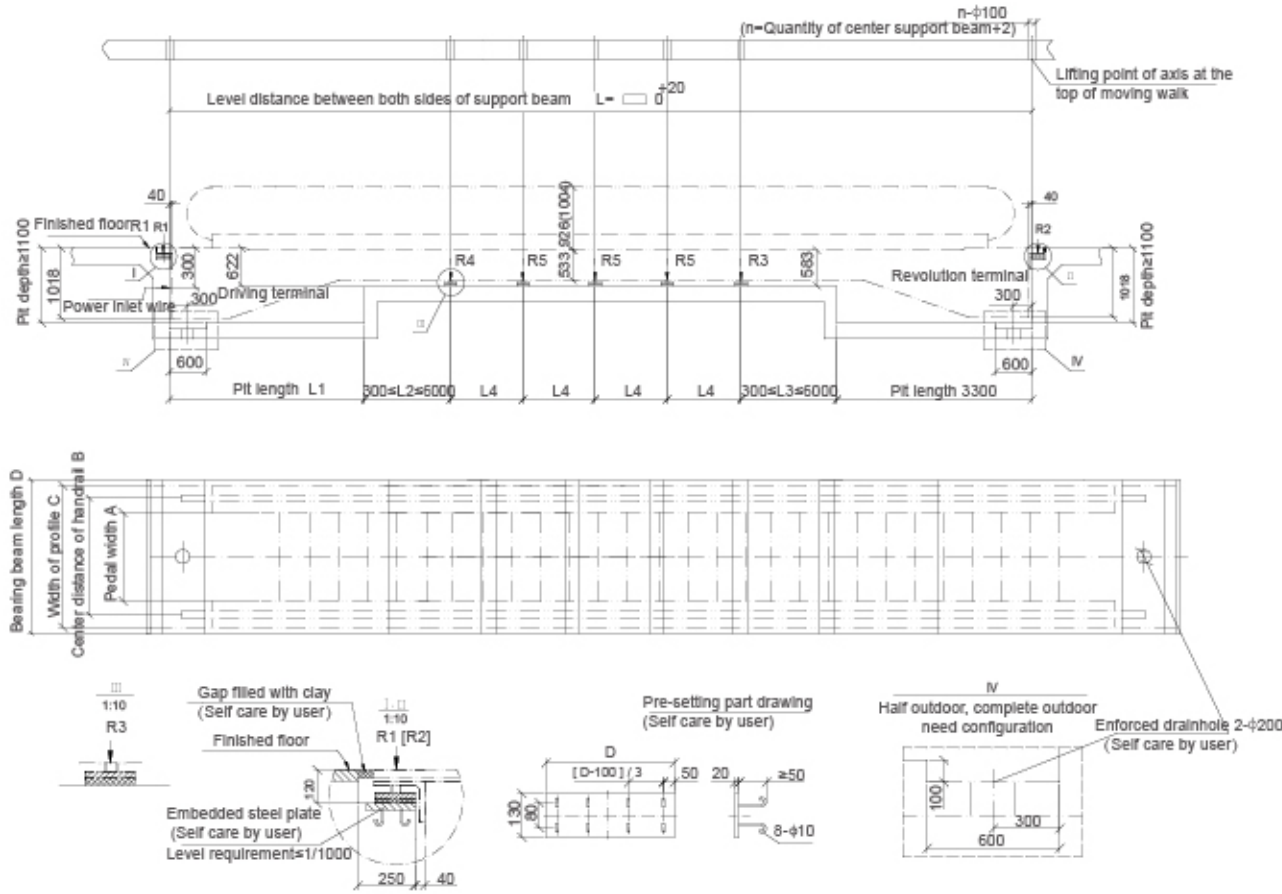
1. When the escalator to be installed above the second floor. Don't have a pit. Layout drawing must be matched between up and down.
2. Keep the sufficient space at both EXIT and ENTRANCE of escalator. The width must be less than 1238. The depth from handrail belt reversed end to the front obstacle must be not less than 2500.
3. Space between handrail belt of escalator and obstacle must be not less than 500.
4. Motor AC 380V 50HZ. See in the table.
5. By the user to provide a grounding resistance of less than 4 ohms.
6. Provide by user to the main switch of the power requirements of 3 phases 5 wires.
7. All the dimensions are measured by MM.

0° MOVING WALK

Construction Layout Drawing

12° MOVING WALK

Construction Layout Drawing



Motor capacity (KW)	Traveling height	
	1000-3000	3000-4000
5.5	5.5	7.5
8	8	11
15	15	15

Center supporting height H1	Traveling height	
	1000-3000	3000-4000
5800	5.5	7.5
7800	8	11
9800	15	15

Technical notes		
Dip angle α	12°	
Speed v	0.5m/s	
Step width A	1000	800
Handrail inner side distance B	1158	958
Handrail center distance C	1238	1038
Moving walk outside width D	1600	1400
Supporting beam length E	1660	1460
Exterior barrier width F	2310	2110
Pit width G	1660	1460
Support opposite force R1 (KN)	0.009xL1+22	0.0078xL1+19
Support opposite force R2 (KN)	0.009xL2+10	0.0078xL2+9
Support opposite force R3 (KN)	0.0117x(L1+L2)	0.01014x(L1+L2)
Support opposite force R4 (KN)	0.0117x(L2+L3)	0.01014x(L2+L3)

Pedal width	1000		800	
Quantity of center support beam L4	6000	10000	6000	10000
Support opposite force (KN)	R1	40	38	34
	R2	34.5	34	31
	R3	62.5	78.5	64.5
	R4	63.5	79.4	54
	R5	48	79.4	40
Motor capacity / Rated current	Conveyor length L		Conveyor length L	
	10000~70000	8KW/18A	10000~80000	8KW/18A
	70001~110000	11KW/25A	80001~110000	11KW/25A

Technical notes	
Dip angle	0-6°
Speed V	0.5m/s
Pedal type	Aluminium alloy (Indoor/Half outdoor/Complete outdoor)
Pedal width A	1000 800
Handrail center distance B	1238 1038
Moving walk outside width C	1600 1400
Machine supporting beam length D	≥1660 ≥1460
Installation place/drive mode	Length L1
Indoor/star delta	4000
Indoor/frequency	4000
Semi-outdoor/star delta	4600
Semi-outdoor/frequency	4600
Outdoor/star delta	4000
Outdoor/frequency	4600
Power supply	User needs to supply 380V AC 50Hz three-phase five-wire power supply. Voltage should ≤10 when moving walk at the start and the voltage should be ≤5 in normal operation. Maximum starting current should less than 3.5 times of rated current.

Notes

1. When the operating environment temperature under 0° (outdoor or semi-outdoor) need increase heater. 2. Sufficient unblocked space is needed at entrance and exit of moving walk and the width should be the center distance at least. The depth (from handrail turn end) should be 2.5m at least, this area width should more than two times of the handrail center distance, the depth can be reduced to 2m. 3. If have the pit should have waterproofing work(self-care by user). 4. The distance between moving walk and any barrier should ≥500, or the Triangle place of handrail and floor should install protecting board(self-care by user). 5. User provide power supply and earth connection equipment with resistance less than 4 ohm, it should leave two meters left margin line under the upper supporting beams, motor capacity according to left form. 6. Luminance at least should be 50Lx at entrance and exit of indoor moving walk, luminance at least should be 15Lx at entrance and exit of outdoor and semi outdoor (self-care by user). 7. If the middle supporting beam use steel frame structure, please ask FUJILF Elevator Company for advice. 8. Two sides and bottom decoration of moving walk self-care by user.

Notes

1. When the moving walk is installed in the second floor and above, pit is canceled. And the bottom and top of construction should be symmetrical. 2. Sufficient unblocked space is needed at entrance and exit of moving walk. The width should not less than 1310 and the depth from handrail belt swerving edge to any barrier should not less than 2500. 3. The distance between moving walk and any barrier should ≥500. 4. User needs to supply a earth connection equipment with resistance less than 4 ohm. 5. When the traveling height H≤2800, cancel to support R3, R4. 6. When the traveling height 2800<H≤5800, we only need to support R3 and L1=L2=L/2. 7. When the traveling height 5800<H≤7800, we only need to support R3, R4 and L1=L2=L3=1/3. 8. This plan is current 12°standard moving walk construction size. If the construction can not be executed, please contact Technology Department of FUJILF Elevator Co., Ltd. 9. The unit in this plan is millimeter. We reserve right to change without prior notice.